

Mercury Product Data Exchange Project

Andy Bray
Project Manager
Northeast Waste
Management Officials'
Association (NEWMOA)

Exchange Network
National Meeting
April 27, 2011

N E W M O A



Overview

- Starting with the end in mind - what does success look like?
- What is the Interstate Mercury Education and Reduction Clearinghouse (IMERC)?
- Background on mercury-added product notification reporting requirements
- Outline of Exchange Network-funded project to:
 - Move notification to e-filing
 - Make data available through Node

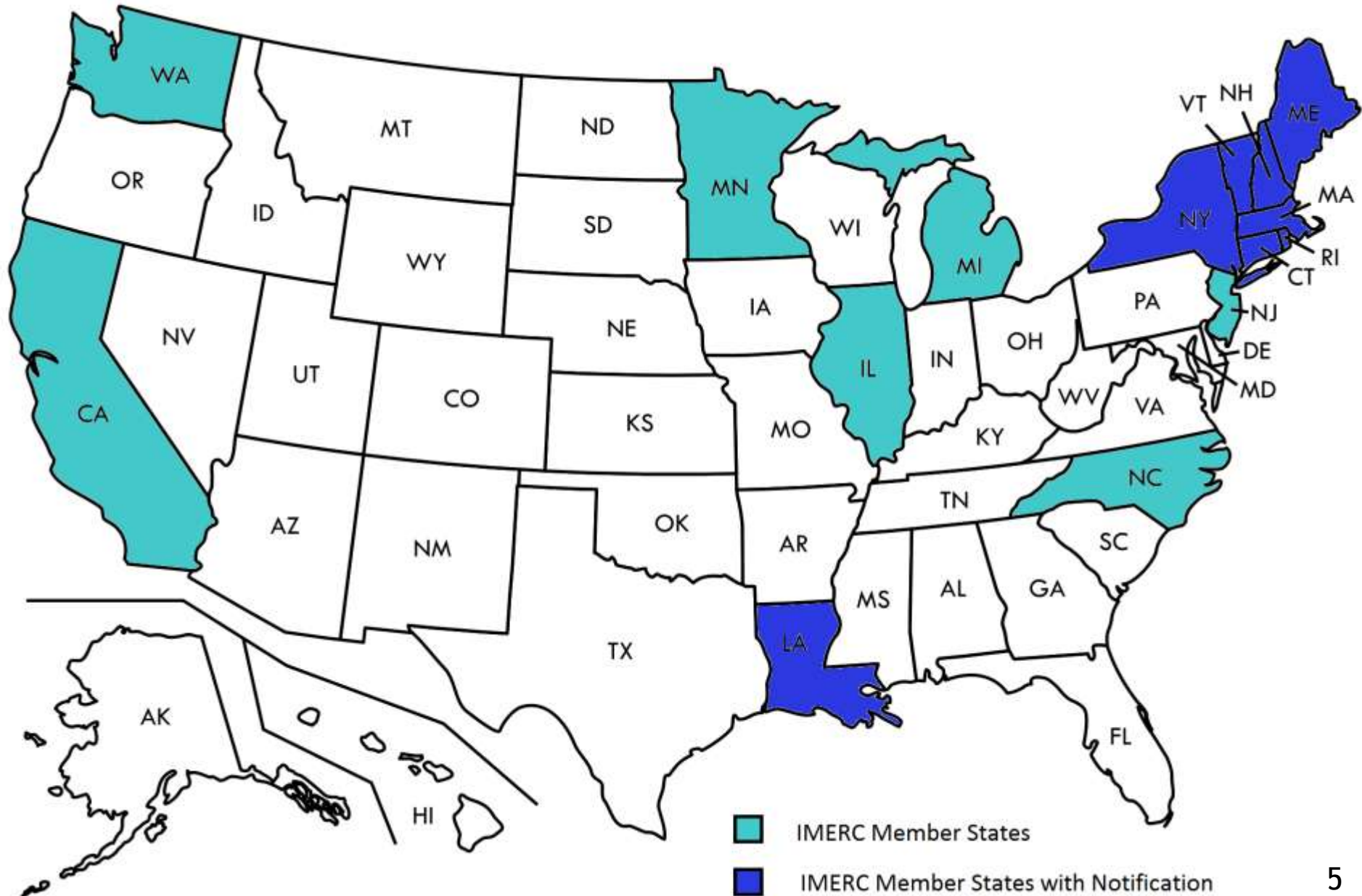
What Does Success Look Like?

- Public user interface modernized, increasing utility of data
- Online reporting launched end of June, early July 2011
- >95% electronic reporting for 2010
- New data flow established and available to states/EPA
- Reporting entities, States, and IMERC Staff save time/resources

What is IMERC?

- Constituted under the Northeast Waste Management Officials' Association (NEWMOA)
- Formed in 2001
- Provides assistance to states with mercury education & reduction laws
- Acts as a single point of contact for regulated community and public

Current IMERC Member States



What are the Product Notification Reporting Requirements?

- What is required?
 - mercury content of products
 - total mercury used in a single year
- Who does it apply to?
 - manufactures, distributors, or importers of products with intentionally added mercury
- Why is it important?
 - informs policy makers, consumers, recyclers, institutional purchasers, supply chain, etc.
 - informs decisions about further action including phase-outs and product bans

Novel Elements of Requirements and the Review Process

- Reporting on products, not emissions/releases or monitoring/testing
- A single submission & approval through IMERC provides a streamlined process for companies to comply with multiple states' requirements
- Shared burden of filing review process means states' workload significantly reduced

Novel Elements (continued)

- Associations can file for membership
- Reporting on a single neurotoxin over a broad range of products
- The universe of products covered by these requirements is enormous
- Toxics in products reporting may be novel now, but not for much longer!

Exchange Network Funded Project

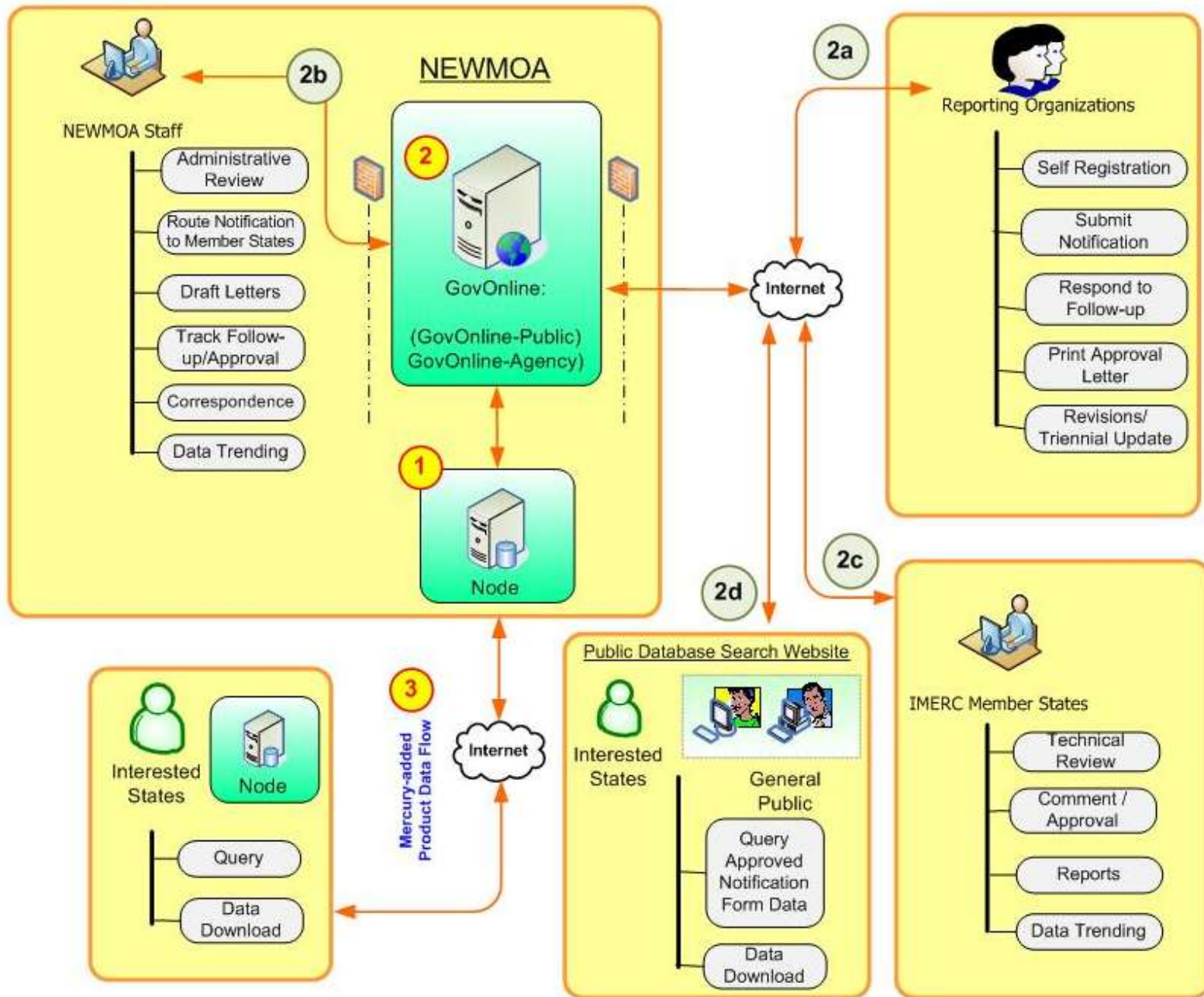
Grant to MassDEP, NEWMOA/IMERC as Subawardee

- Develop e-filing system
- Establish a Network Node
- Create a Mercury Products Data Flow
- Make the data available through the EN Browser
- Expand/modernize online data publishing features

Goals of the Project

- Eliminate inefficiencies and potential errors from paper submission
- Streamline work flow of states' reviews
- Vastly decrease data publishing lag time
- Improve business rules and processes
- Allow real-time transfer of data set to EPA, states, or others
 - e.g., EPA's Database on Mercury-Containing Products and Alternatives:
www.epa.gov/mercury/database.htm

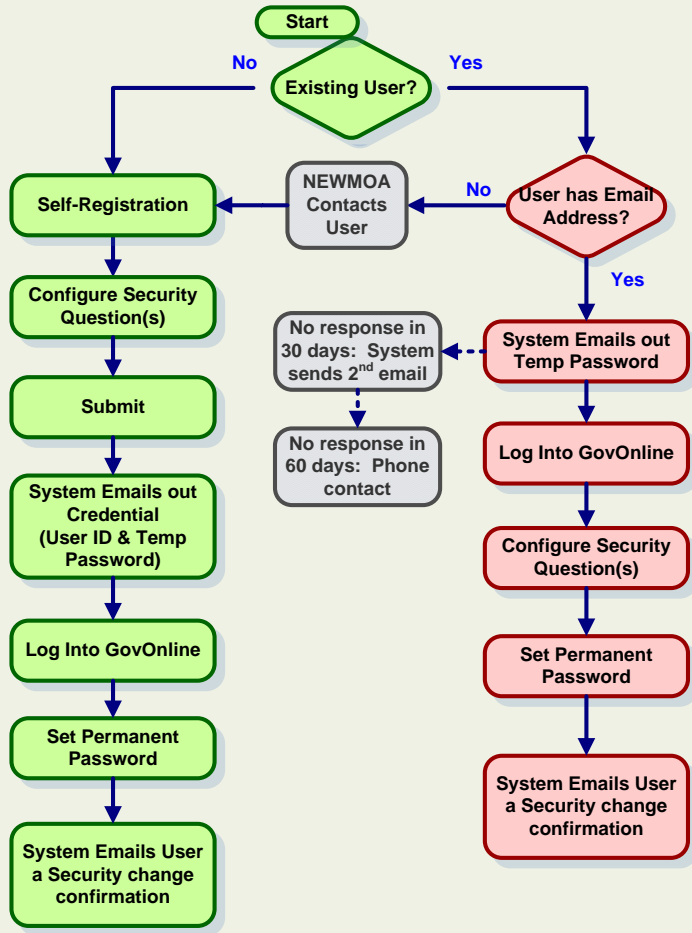
NEWMOA Toxicity in Products Reporting Project Overview



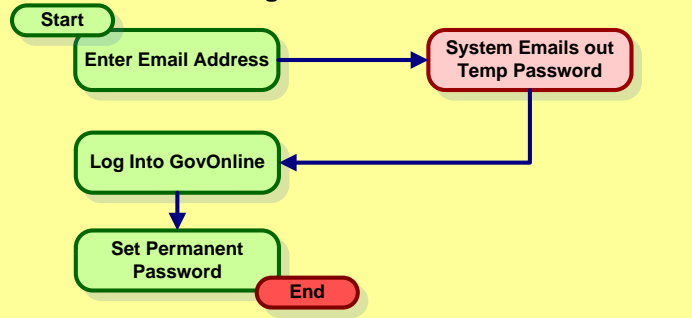
GovOnline System Components

- User Account Management: user account establishment, forgotten password, and user login
- e-Filing: create a new application, edit existing application, and renewal (triennial or updated filing)
- Review: administrative review (NEWMOA), technical review (IMERC), and approval (NEWMOA/IMERC)

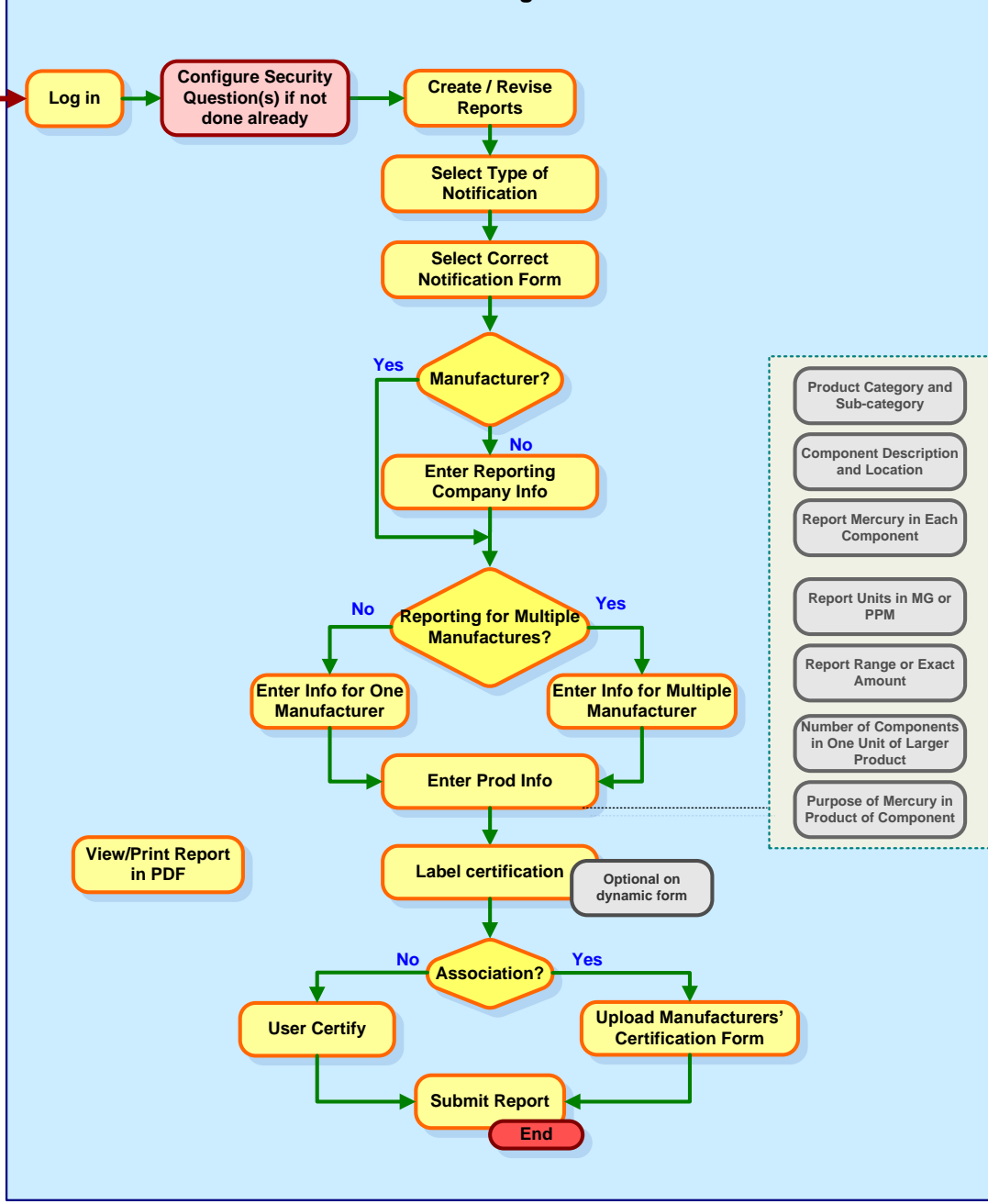
User Account Establishment



Forgot Password

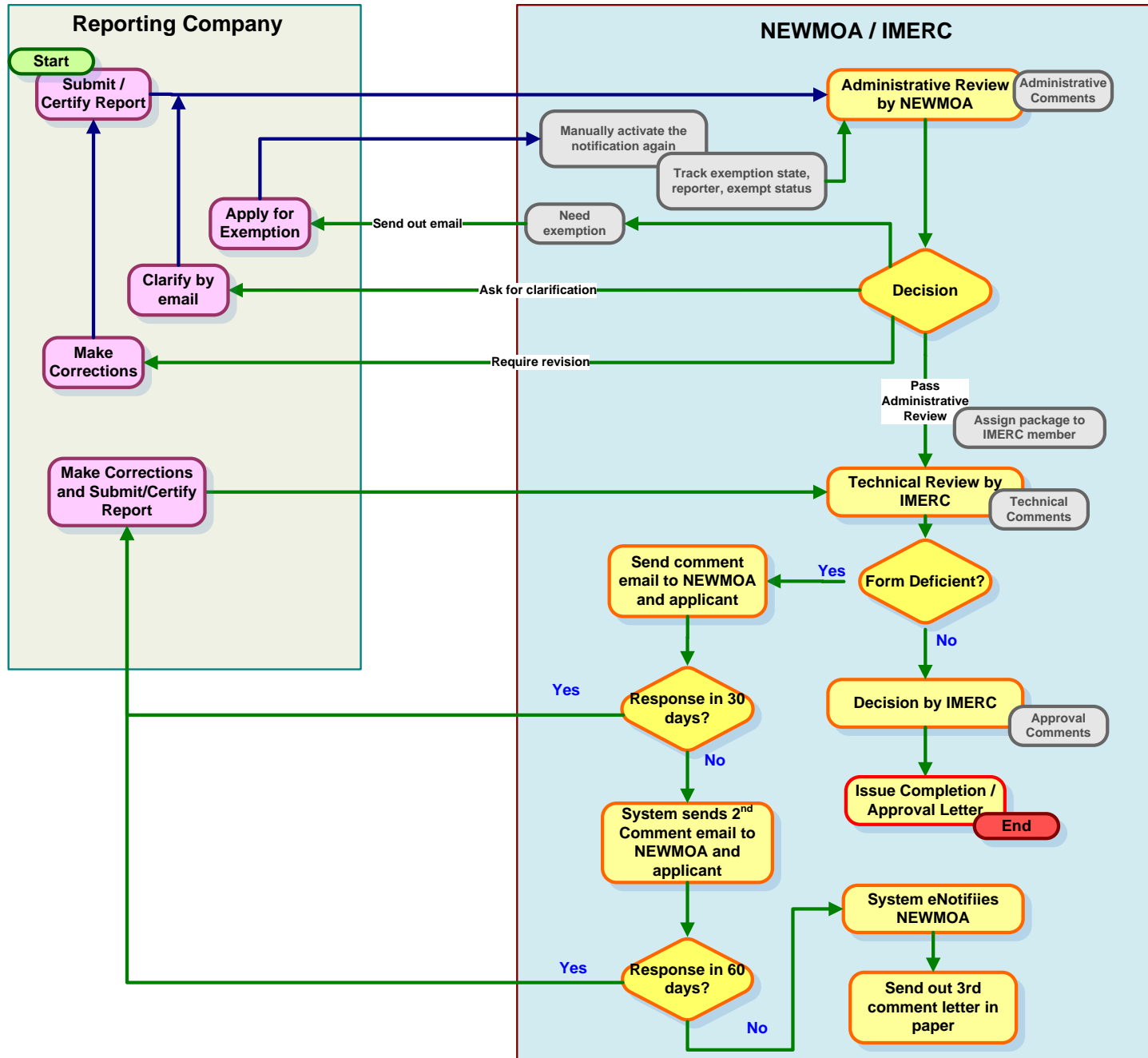


E-Filing



- Product Category and Sub-category
- Component Description and Location
- Report Mercury in Each Component
- Report Units in MG or PPM
- Report Range or Exact Amount
- Number of Components in One Unit of Larger Product
- Purpose of Mercury in Product of Component

Review Business Process Work Flow



Demonstration

Early Successes of Project

- Data migrated from legacy system
- e-Filing Beta System to State and reporting entity Beta Testers, 4/29
- Challenges of integrating new public browse/search with NEWMOA/IMERC website overcome
- On schedule for e-Filing launch early July

Next Steps

- Beta testing underway, to be completed mid-May
- System launch anticipated by early July
- Node and flow established Summer 2011
- Project completed, 9/30/2011

More Information

For more information on IMERC, visit:
www.newmoa.org/prevention/mercury/imerc

Contact: Andy Bray
(617) 367-8558 ext. 306
abray@newmoa.org