

# Testing AQS Node Submissions

Updated June 29, 2010

## What you will need

1. Test data. Preferably with schema version 2.2. Also, to keep things as simple as possible, we strongly recommend that you initially test with inserting raw data (measured values) only and limit the number of measured values to two or three hundred at most. Note that the AQS Extract Raw Data report lets you pull your existing data from AQS in XML v2.2 format. This report can be run using the standard reports screens.
2. An AQS User ID and password.
3. A CDX Test Node account associated with the AQS User ID.

## Background

Getting data into AQS is a process with 5 steps.

1. Transfer your data file to EPA
2. Load the data into AQS. If there are no errors, skip to step 4.
3. If there are errors:
  - a. Review and correct the data and return to step 2, or
  - b. Delete the data and return to step 1
4. Run the Stat/CR process and view reports about the impact of the newly submitted data on the data already in AQS.
5. Post the data to the database.

Making a node submission only replaces step #1. The rest of the steps must be done from within the AQS application by a registered user.

At some point in the future steps 2, 4, and 5 will be happen automatically with a node submission. If the submitted file contains errors, step 3 will always be a manual process.

## Testing Process

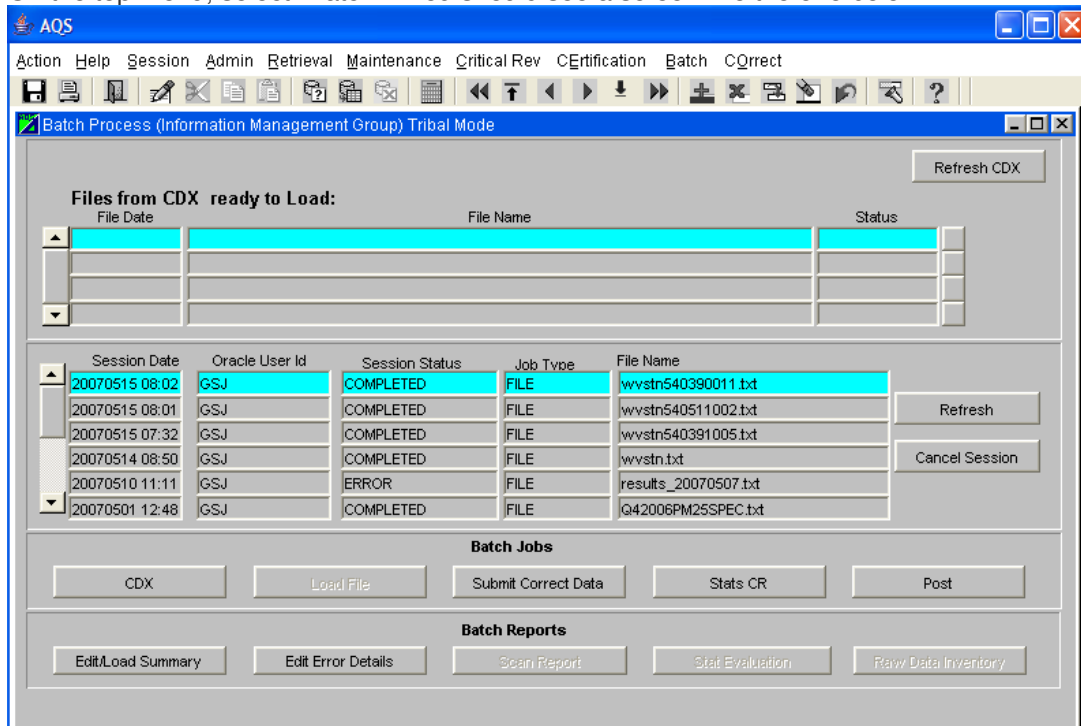
This is a detailed description of how to do steps 1 and 2 above. Performing steps 1 and 2 below will demonstrate that you can make a successful node submission and pass schema validation. Performing step 3 below will demonstrate that the submitted XML file can be read by AQS (which has data structure business rules beyond what schema validation can check for). It is possible to make a successful node submission with a file that AQS cannot read, so performing step 3 is critical to ensure full testing.

1. Validate the XML file that you plan to submit; you can use a product like XML-Spy or the Exchange Network validation tool at <https://tools.epacdxnode.net/test/> for this purpose. (The contents of the file will not be loaded if it does not pass XML schema validation.)
2. Submit the test data file from your (test) node to the EPA CDX test node.
  - a. Details of the message construction are in the AQS Flow Configuration Document (FCD) located on the EN website: <http://www.exchangenetwork.net/exchanges/air/aqs.htm>
  - b. If you have any questions or issues related to node submissions, please call the node helpdesk at 888-890-1995 option 2.
3. Find your local AQS user and ask them to log onto the AQSQA database and load the data file that was just transferred. Below are detailed, step-by-step instructions.
  - a. Open the AQS application at: <http://www.epa.gov/ttn/airs/airsaqs/aqsweb/>, proceed to AQS, and agree to the terms and conditions.
  - b. On the logon screen that is displayed, enter your AQS user ID, AQS password, and change the database to "AQSQA"<sup>1</sup>. If you don't remember your password or it has expired, call the AQS helpdesk at 866-411-4372. Be sure to tell them you need your AQSQA password reset.
  - c. On the welcome screen, select "Screening Group Access".
  - d. From the pop-up window, select the screening group that 'owns' the data that was submitted.

---

<sup>1</sup> You must use the AQSQA database for node testing; only this database will see files that you submit via the EPA CDX test node.

- e. On the top menu, select “Batch”. You should see a screen like the one below:



You will notice a row of 5 buttons near the bottom of the screen that correspond to the 5 steps of processing AQS Data. The first button will open a CDX Web window.

- f. If the file you transferred via the node does not appear on the upper list within a few minutes, request the status of your submitted file from your node to ensure that it has been successfully processed by the EPA CDX node. (Once the status indicates that it has been successfully processed by the EPA CDX node, it should show up on the above window immediately.)
  - g. Highlight the file on the upper list by clicking the name (so the line is light blue – it should default to this condition).
  - h. Click the “Load File” button at bottom of the screen. The file will be moved from the upper list to the top of the lower list with a Session Status of ACTIVE. You can click on the “Refresh” button on the right to update the Session Status. It will change to ERROR or COMPLETED.
  - i. If you get a status of COMPLETED, the file had no errors (XML or data quality) congratulations!
4. If you get status of ERROR, the “Edit Load Summary” will provide the counts of the data elements (transactions) successfully processed and the counts of the data elements in error, and the “Edit Error Details” reports will display any elements with errors and the error messages.

Note: If you get errors in the data, the data will remain in the AQS “staging” space and conflict with new incoming data for the same monitors and times. You can either try again with different data or clean out the data in the staging space. Cleaning out the staging space can be a complex process depending on the errors in the file and is beyond the scope of this document.

If you have you have questions or issues related to AQS usage or data, you may call the EPA main helpdesk at 866-411-4372 and tell them you have an AQS issue. (Please note that the test environment does not have the same schedule as AQS and may not always be available.)

For general questions, or additional help, the AQS flow contact is Robert Coats: [coats.robort@epa.gov](mailto:coats.robort@epa.gov)