

# **NOLA Node Mentoring Workshop XAware Breakout Session**

**February 9, 2004**

**Dennis Burling**

IT Manager

NE Environmental Quality

**Brett Stein**

Vice President of Solutions

XAware, Inc.

# Agenda

- ▶ History
- ▶ Involvement of Programs
- ▶ Current IT Environment
- ▶ Contractor Experience
- ▶ Product Demonstration
- ▶ Q & A

# History

- ▶ How did Nebraska select the contractor for the node project?
  - What criteria was used for the selection?
  - Did XAware have a lot of experience with the product?
- ▶ How did Nebraska select the product?
  - What criteria was used for
    - selection of hardware?
    - Interoperability with current information systems?

monster®  
today's the day™



## Involvement of Programs

- ▶ How are program staff involved in the project both at the grant and implementation levels?
- ▶ Where does the flow of information regarding node opportunities originate?
- ▶ What information are we going to flow?

# Current IT Environment

## ▶ Environmental Information System

- DB2 on IBM AS/400

## ▶ Node

- Desktop running Windows NT
- Node solution running on Tomcat Web Server
- Planning to move to IBM WebSphere on IBM AS/400

## Installation of XA-Node

- ▶ What hardware was obtained for the node?
- ▶ What software was obtained for the node?
  - Tomcat web server
  - XAware XA-Node solution
- ▶ What steps were involved in setting up the node?
  - Installation of XA-Node CD
  - Creation of mappings to DB2 using XAware XA-Designer
- ▶ How long did the process take?
- ▶ What other HW/SW configurations can the product be used with?
  - XA-Node can be deployed on any web or application server
    - Tomcat, Apache, IIS, BEA WebLogic, IBM WebSphere, Oracle 9iAS, SunOne, JBoss, JRun

# Nebraska Node



## Configuring XA-Node

- ▶ Was it difficult to configure XA-Node within your network operation?
  - Installation CD sets up the proper directory structure
  - Deployment directory contains the .war file that gets deployed on web/application server
  - XA-Designer (visual development environment) is used to create mappings between data exchange templates and data sources
- ▶ How long did it take to configure and set up with your systems?



# Using XA-Node

- ▶ How did you test the product?
  - CSC Test Tool
  - XA-Designer has a WSDL Tester
- ▶ What have you done to set up flows?
  - FRS and NEI flows created using XA-Designer
- ▶ Product Usage (covered on following slides)
  - Was the product easy to use, and how was it used?
  - How will the product map your data to a schema?
  - Are there other features of the product that you are not using?
    - XAware's XA-Suite is a set of components that allows for the mapping between XML schemas, or data exchange templates, and data sources, creating dynamic XML views in a visual, drag and drop data mapping environment regardless of the data source.

# Product Overview

## Application Interfaces

### Client Connectivity to iServer

- ▶ Support for HTTP, Servlet, Soap, EJB, JMS, ISAPI, Custom

## XA-iServer

### Run-time Integration Engine

- ▶ Dynamic XML views of data on-demand
- ▶ Flexible deployment – app server, web server
- ▶ Secure
- ▶ Scalable

## Adaptors

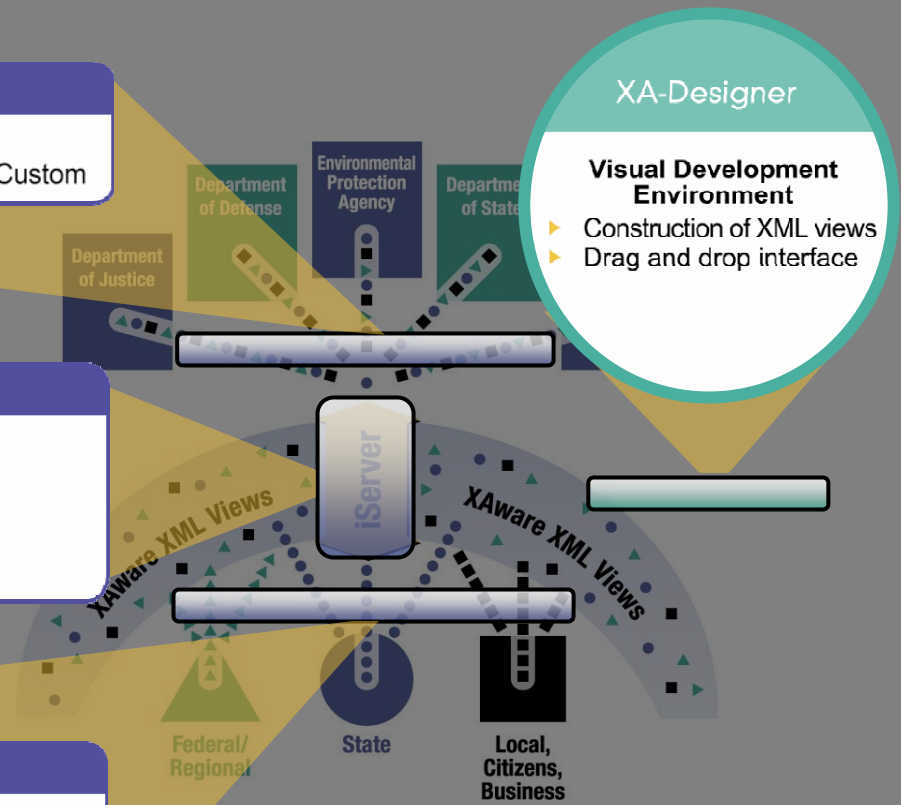
### Connectivity to Data Sources

- ▶ Client/server
- ▶ Packaged and custom applications
- ▶ Unstructured, mainframe, RDBMS

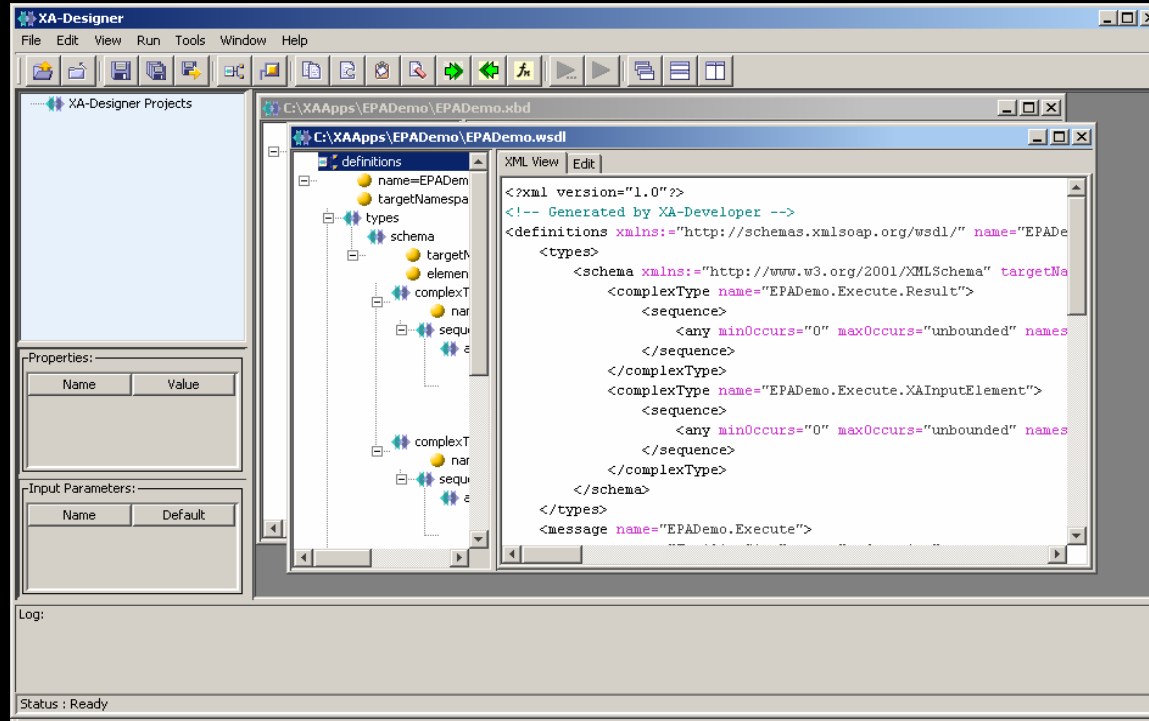
## XA-Designer

### Visual Development Environment

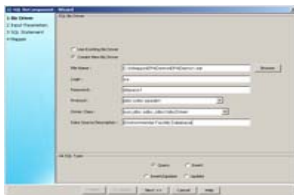
- ▶ Construction of XML views
- ▶ Drag and drop interface



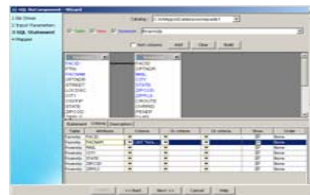
# XAware Approach – building web services



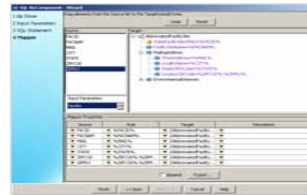
**Connecting to  
data sources**



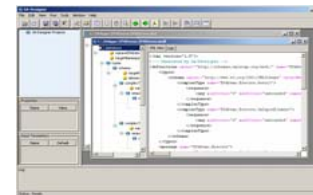
**Building the  
queries**



**Mapping the  
data**



**Building  
web services**



## Staff Requirements

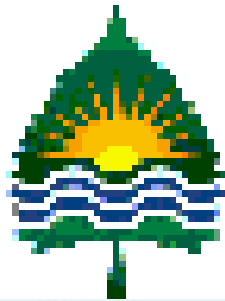
- ▶ What staffing was needed for the installation?
- ▶ What experience did Nebraska start with?
- ▶ What training did we have or is available for the product?
- ▶ Did the contractor provide training on the product and installation?
- ▶ What experience do we have now?

# Contractor Experience

- ▶ How long have they been working with the product?
  - XAware has been developing its core data integration product suite since 1997
  - We have been involved with the ExchangeNetwork since the very early stages of the initiative
- ▶ Do they have other installations or projects?
  - XAware's XA-Node solution is the solution of choice for:
    - Nebraska, California, Maryland, Vermont, Virginia, Pennsylvania, Iowa, Minnesota, and New Mexico (embedded in Integro solution)
    - Colorado, Illinois, and Missouri have tentatively selected XA-Node
  - XAware has a wide variety of clients in the government and financial services sectors, including
    - Unisys, Lockheed Martin, Raytheon, Bureau of Land Management, ING, Merrill Lynch, FGM

# XAware Demonstration





## Q & A

**Thank You!**

**Dennis Burling**

IT Manager

NE Environmental Quality

**Brett Stein**

Vice President of Solutions

XAware, Inc.