

Environmental Information



EN2017

RISK MANAGEMENT PLAN DATA EXCHANGE

Mike Matsko, New Jersey DEP

2017 Exchange Network National Meeting

Innovation and Partnership

May 15-18, 2017

Sheraton Philadelphia Society Hill Hotel
Philadelphia, Pennsylvania

#EN2017

<http://www.exchangenetwork.net/en2017>

ABSTRACT

Under section 112(r) of the 1990 Clean Air Act amendments, facilities (that use extremely hazardous substances) are required to submit Risk Management Plan (RMP) data to the EPA. **Many of these facilities are also required to submit RMP data to NJDEP.**

In a effort to reduce reporting burden, the RMPREPORT data exchange was created.

RMP Business Needs

- NJDEP needed an electronic RMP submittal system for the regulated community
- EPA and NJDEP wanted to reduce the reporting burden for the regulated community

RMP Partnership

- EPA collects RMP data electronically
- Many of the same Facilities are required to submit data to NJDEP
- Could an Exchange Network (EN) data flow from EPA to State Nodes be built to facilitate reduced reporting burden?

RMP Partnership

- EPA was supportive in exploring an EN solution
 - Provided vendor support (CGI Federal) to develop an EN compliant data flow
 - Provided staff support to participate on project as SMEs
- NJDEP was excited about this partnership!
 - Provided vendor support (enfoTech) to develop a Node plug-in
 - Provided vendor support (Systemetrix) to develop a NJ Web Application
 - Provided staff to implement a solution

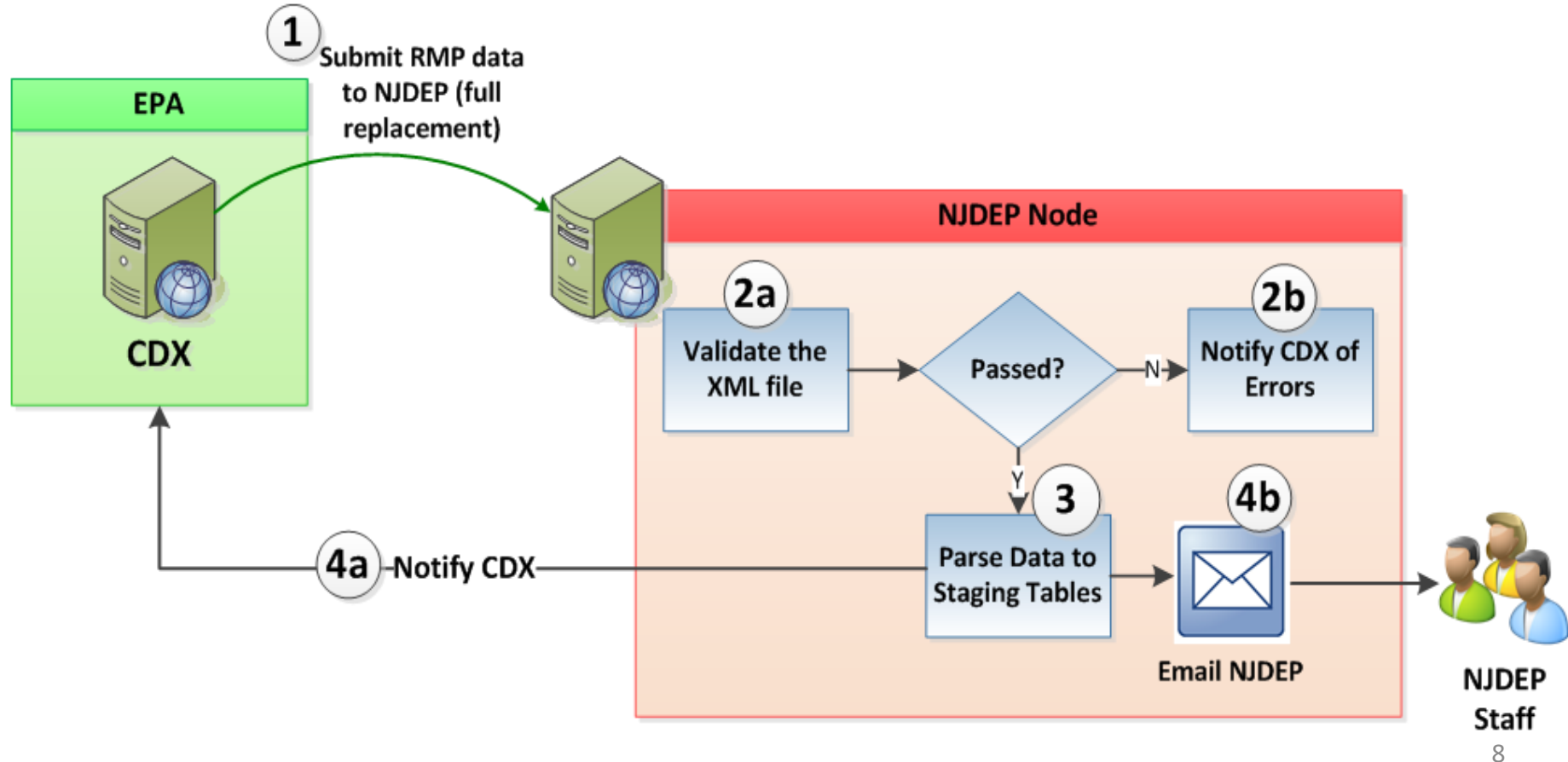
RMP Partnership

- **EPA** – Margaret Gérardin, Peter Gattuso
 - **CGI Federal** – Ken Farris, Jacob Noble, Luke Gentry, Lev Yarmovsky, Lydia Lyshevski, Artyom Tsaturov
- **NJDEP** – Beth Reddy, Iclal Atay, Paul Komosinsky, Aleem Mohamed, Victor Aboh, Mike Matsko
 - **enfoTech** - Dan Jeng, Tony Jeng, Charlie Zhang, Charlie Tsai
 - **Systemetrix** – Monica Day, Phyllis Schiavone, Eric West
 - **CGI State** - Vivek Mehta

RMP Innovation

- Build an Exchange Network data flow (RMPREPORT) from EPA to NJDEP
- Load EPA data into NJDEP database
- Build a New Jersey RMP web application
- Prefill New Jersey RMP submissions with EPA data

RMPREPORT Data Flow (high level)



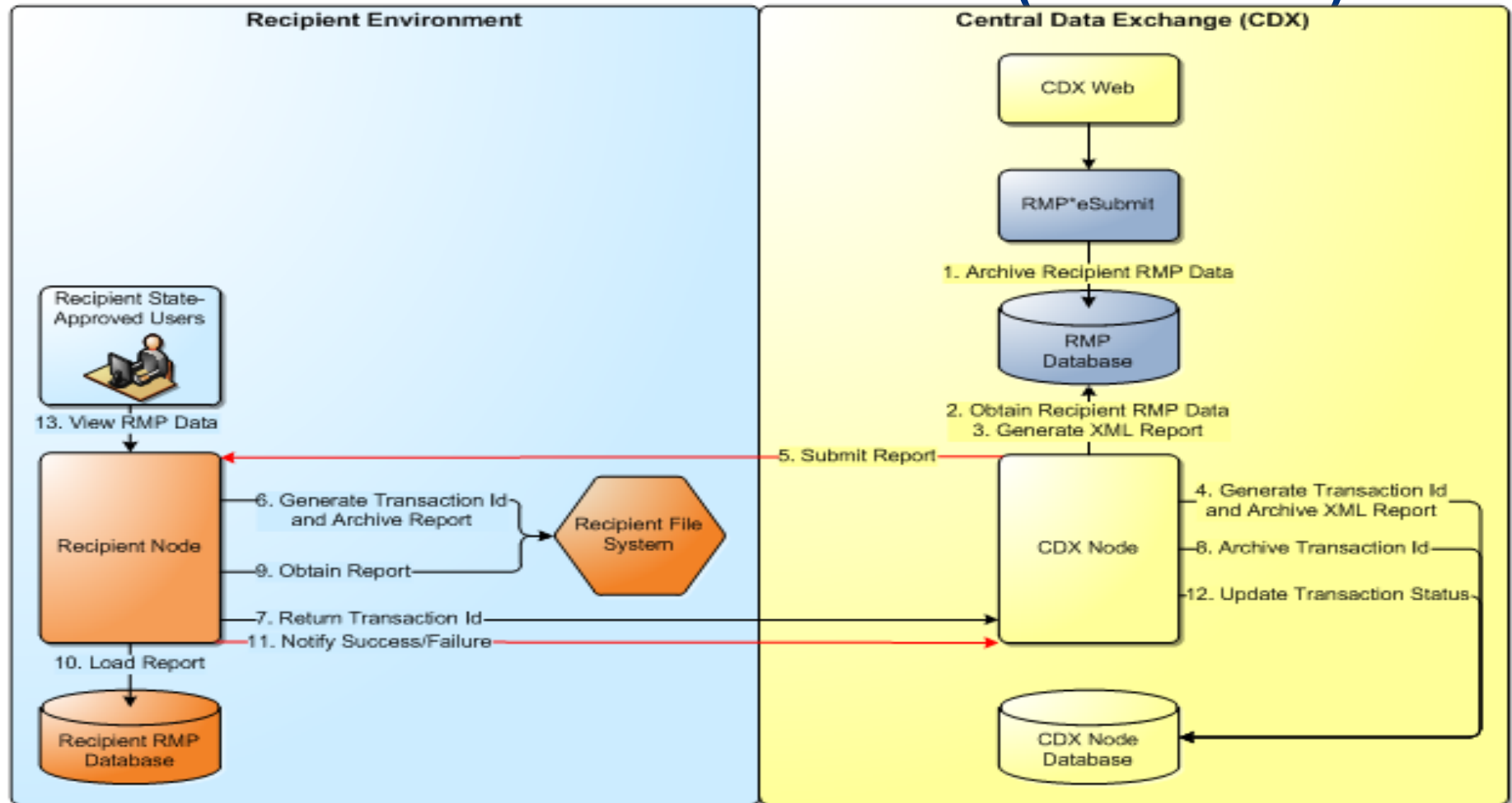
RMPREPORT Data Flow Components

- EPA/CGI Federal Developed EN Schema
 - RiskManagementPlanFacilityInformation
 - RiskManagementPlanRegistrationInformation
 - RiskManagementPlanProcess
 - RiskManagementPlanAccident
 - RiskManagementPlanEmergencyResponse
- EPA/CGI Federal Developed EN Daily Submit Service

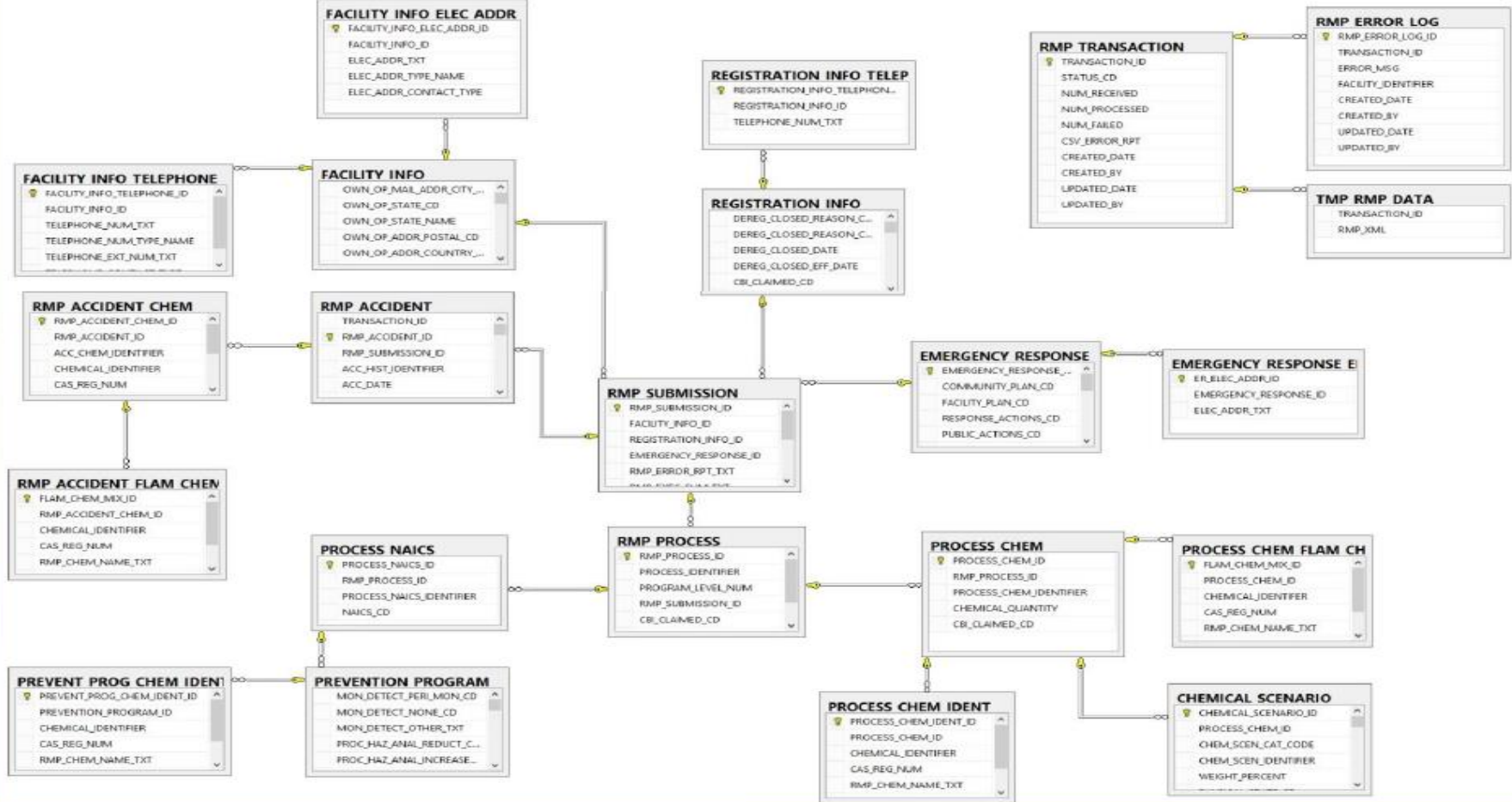
RMPREPORT Data Flow Components

- enfoTech Developed NJDEP Node Plug-In
 - Receive Daily “full replace” submission from EPA
 - Perform Schema Validation
 - Parse complete RMP dataset into staging tables
 - Notify CDX of parsing status (web service)
 - Notify NJDEP staff of parsing status (email)

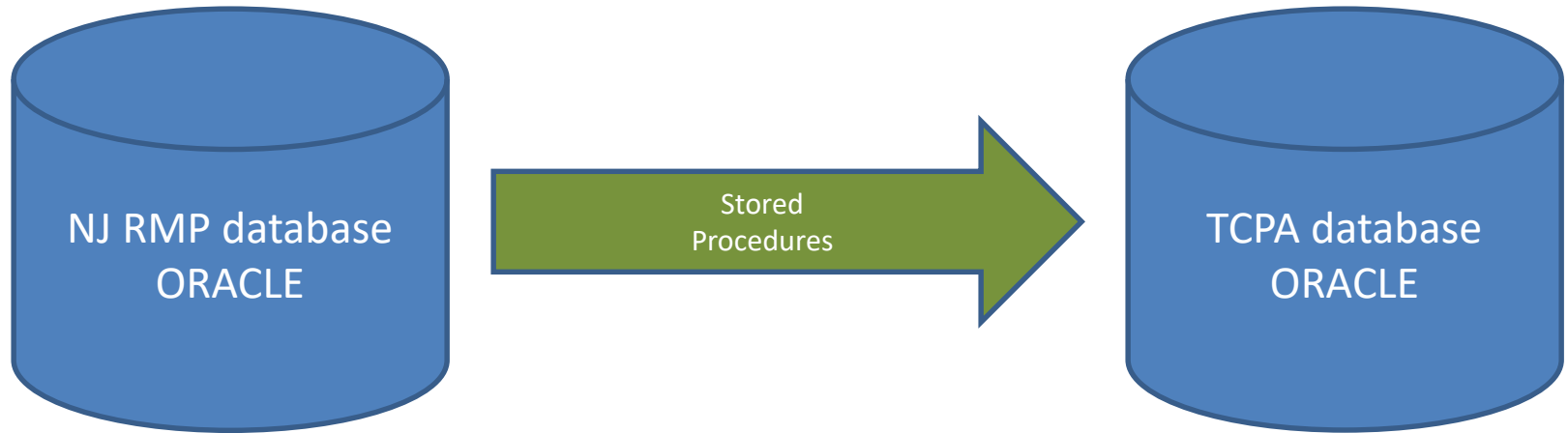
RMPREPORT Data Flow (detailed)



NJ RMP Database



NJ RMP Data Transformation



NJ RMP Web Application

- EPA RMP data integration with State system
 - Systemetrix developed stored procedures to transform EPA RMP data into NJDEP TCPA database
- Web Application must populate EPA RMP data
 - Systemetrix developed the *eNJRMP* web application that prefills a facility RMP submission with EPA data

eNJRMP Web Application



STATE OF NEW JERSEY
DEPARTMENT OF ENVIRONMENTAL PROTECTION
eNJRMP



Facility Legal Name: XYZ INC.
New Jersey TCPA ID: 5123

Submissions

Create A New Submission



Return to Facility List

Logout

Help

Edit/View Existing Submissions

Edit	View	Created	Received	Submission Status	Submission Type
		11/18/2015	11/18/2015	View	Resubmission
		10/23/2015	10/23/2015	View	Correction
		10/21/2015	10/21/2015	View	Correction
		08/25/2015	08/25/2015	View	Correction
		08/25/2015	08/25/2015	View	Correction
		06/12/2015	06/12/2015	View	Correction
		04/09/2015	04/09/2015	View	Correction
		05/19/2014	05/19/2014	View	Correction
		09/18/2013	09/18/2013	View	Initial

eNJRMP New Submission



STATE OF NEW JERSEY
DEPARTMENT OF ENVIRONMENTAL PROTECTION
eNJRMP



Create New Submission

Facility Legal Name: XYZ INC.
EPA Facility Identifier: 1000000000000
New Jersey TCPA ID: 5123

Select Submission Type: ☐ Correction ☐ Resubmission

For each Submission Section below, select whether this new Submission should be pre-populated with data from the latest EPA submission or with data from the latest New Jersey submission. A selection must be made for all Sections listed.

Submission Section	Latest EPA Submission (Initial Submission received 03/11/2015)	Latest New Jersey Submission (Resubmission received 11/18/2015)
Registration	<input type="checkbox"/>	<input type="checkbox"/>
Accident History	<input type="checkbox"/>	<input type="checkbox"/>
Emergency Response Plan	<input type="checkbox"/>	<input type="checkbox"/>
Executive Summary	<input type="checkbox"/>	<input type="checkbox"/>
Processes, Chemicals, Scenarios, and Prevention Programs Level 3	<input type="checkbox"/>	<input type="checkbox"/>

Create A New Submission

Cancel Create Submission

Department: [NJDEP Home](#) | [About DEP](#) | [Index by Topic](#) | [Programs/Units](#) | [DEP Online](#)
Statewide: [NJ Home](#) | [Services A to Z](#) | [Departments/Agencies](#) | [FAQs](#)

Copyright © State of New Jersey, 1996-2015

eNJRMP Certification



STATE OF NEW JERSEY
DEPARTMENT OF ENVIRONMENTAL PROTECTION
eNJRMP



Facility Legal Name: PETE'S CHEMICALS
New Jersey TCPA ID: 5391

Submission Type: Resubmission

Submit RMP

To Submit an RMP:

The certification must be signed by the qualified person or position specified in the Risk Management Plan or a person of higher authority for the owner or operator:

Name of Qualified Person: Mr. X.
Title of Qualified Person: Manager

1. Enter the Certifier's Name and Title:

Certifier Name

Mr. Y.

Certifier Title

President

2. Produce the Certification Document using the 'Print Certification Document' button.

Print Certification Document

3. Print, sign and date the Certification Document, and scan it into your computer.

4. Select the signed Certification Document from your computer, using the 'Browse' button below. It will be uploaded with the RMP submission.

Certification Document Name

(Permitted File Types: pdf, jpeg, jpg, gif, bmp, tif)

U:\Misc PDFs\Signed eNJRMP Cert Form.pdf

Browse...

5. Submit the RMP using the 'Submit RMP' button.

Submit RMP

Cancel

RMP Data Exchange Reusability

- RPMREPORT can be configured to send data to other State NODES
- NODE plug-in can be built to parse XML in State databases and Notify EPA of success/failure
 - CA and OH have RMP programs
- Resources
 - <http://www.exchangenetwork.net/data-exchange/rmpreport/>
 - <http://www.nj.gov/dep/enforcement/tcpa/rmp.htm>
 - Margaret Gérardin, EPA RMP Reporting Center: gerardin.margaret@epa.gov
 - Mike Matsko, NJDEP: mike.matsko@dep.nj.gov

RMP Data Exchange

Questions?