

The background features a large, faint, light-green watermark of the United States Environmental Protection Agency (EPA) seal. The seal is circular, with the words "UNITED STATES" at the top and "ENVIRONMENTAL PROTECTION AGENCY" at the bottom. In the center is a stylized flower with three leaves.

# **Facility Registry Service Data Access**

EN2014 – February, 26 2014

# Overview

- Facility look-up service
- Facility Linkage Application (FLA)
  - Data stewardship tool
  - Allows you to access and suggest corrections to FRS data
- Requirements gathering
  - Two sessions this week and ongoing communication!

# Using the Facility Look-Up API

## Scenario: Responding to an Emergency

- Facility Look-up service
  - Search for a facility by:
    - State IDs
    - Facility name
    - Address
    - Lat long
    - And more
  - Get data including:
    - State information (submitted through FAC ID)
    - EPA program information
    - Direct reporter information
    - Data from other federal agencies
    - Lat long
    - Radial search
    - Cross state boundary data



Untitled Document x

← → ↻ druidsmith.github.io/demo/SysIDQuery.html

## Facility Search by State ID

State Acronym Wisconsin - Environmental System Registry (WI-ESR)

State ID 162059

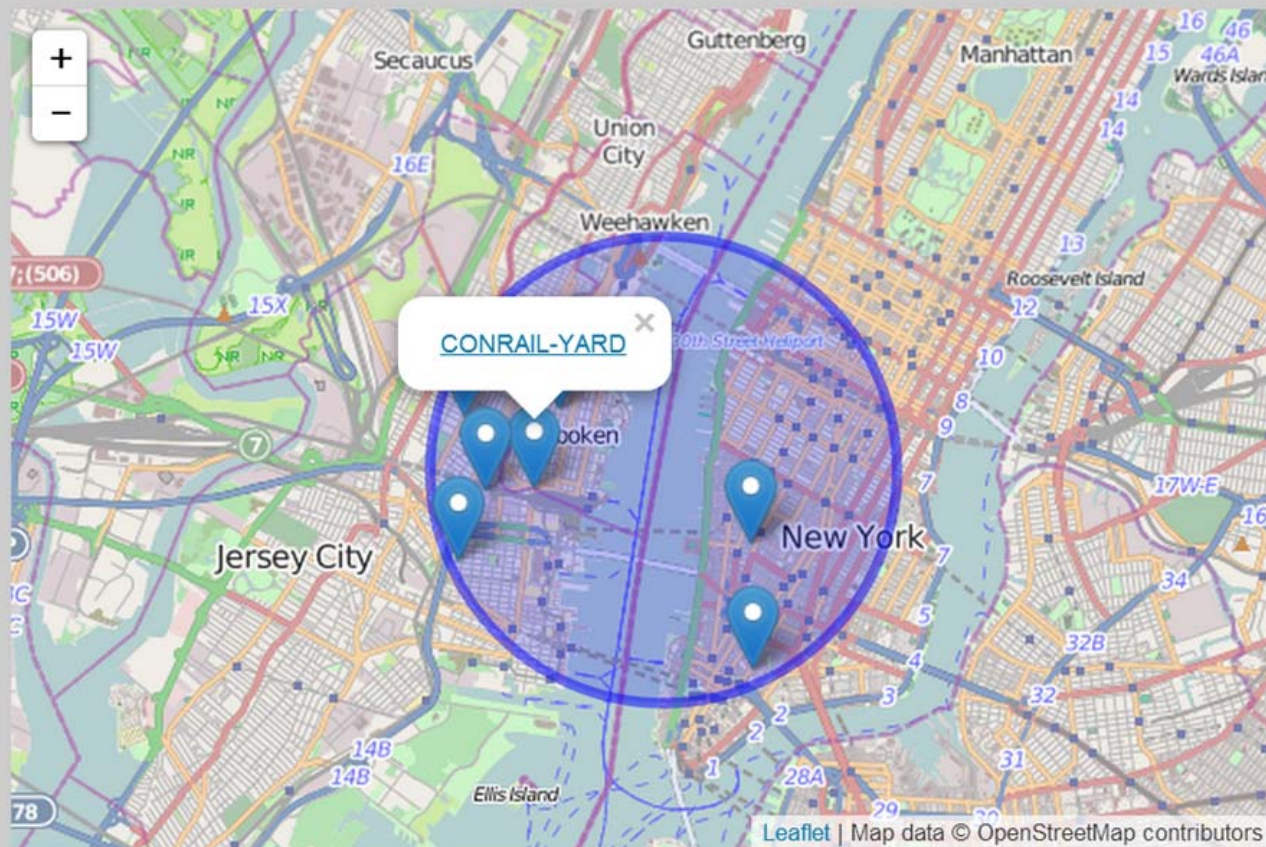
[search by system ID](#)

☐ **BRENNTAG GREAT LAKES LLC** [FRS Registry ID: 110000416158](#)  
W194 N11756 MCCORMICK DRIVE  
GERMANTOWN WI 530222491

## Map Search

Pan and zoom to area of interest; select search parameters, and click on the map to query.

Search National Program:  Search Radius:  (miles)



### CITY CHEMICAL CORP

- CERCLIS Program ID: NJD001306414
- ICIS Program ID: 2656053
- ICIS Program ID: 811
- NJ-NJEMS Program ID: 7442
- RCRAINFO Program ID: NJD001306414

### CONRAIL-YARD

- CERCLIS Program ID: NJD980770036

### EIGHTH STREET SITE

- CERCLIS Program ID: NJD986571115

### NEW YORK CITY ANTHRAX



# Using the API Responding to an Emergency



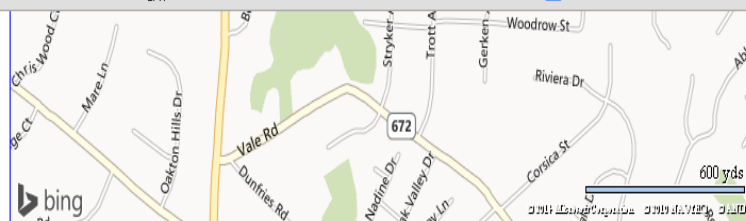
## Envirofacts

You are here: [EPA Home](#) » [Envirofacts](#) » [Facility Registry Service \(FRS\)](#) » [FRS Facility Query](#)

## FRS Facility Detail Report

[Home](#) [Multisystem Search](#) [Topic Searches](#) [System](#)

FRS



Environmental Interests

Information System	Information System ID	Environmental Interest Type	Data Source	Last Updated Date	Supplemental Environmental Interests:
AIR FACILITY SYSTEM	5105901060	AIR MINOR (Y)	AIRS/AFS	11/15/2013	

Additional EPA Reports: [MyEnvironment](#) [Enforcement and Compliance](#) [Site Demographics](#) [Facility Coordinates Viewer](#) [Environmental Justice Map Viewer](#) [Watershed Report](#)

### Standard Industrial Classification Codes (SIC)

Data Source	SIC Code	Description	Primary
AIRS/AFS	4911	ELECTRIC SERVICES	
AIRS/AFS	OWNE		

### National Industry Classification System Codes (NAICS)

Data Source	NAICS Code	Description	Primary
AIRS/AFS	221119	OTHER ELECTRIC POWER GENERATION.	
AIRS/AFS	D/OPER		

### Facility Codes and Flags

EPA Region:	03
Duns Number:	
Congressional District Number:	11
Legislative District Number:	
HUC Code/Watershed:	02070008 / MIDDLE POTOMAC-CATOCTIN
US Mexico Border Indicator:	
Federal Facility:	NO
Tribal Land:	NO

### Alternative Names

Alternative Name	Source of Data
FAIRFAX COUNTY - LITTLE VIENNA PUMPSTAT	AIRS/AFS

### Organizations

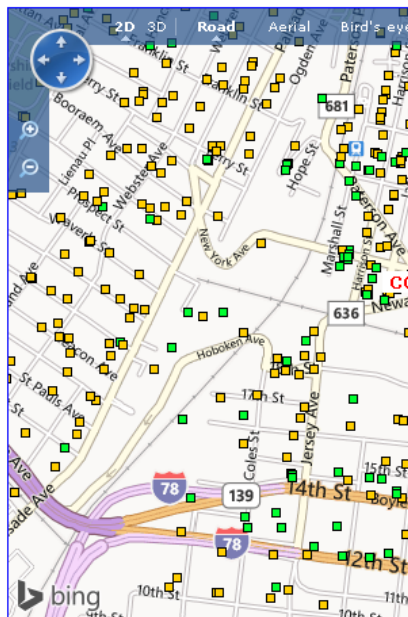
No Organizations returned.

### Facility Mailing Addresses

Affiliation Type	Delivery Point	City Name	State	Postal Code	Information System
FACILITY MAILING ADDRESS	12000 GOVERNMENT CENTER PARKWA	FAIRFAX	VA	220350052	AIRS/AFS

### Contacts

Affiliation Type	Full Name	Office Phone	Information System	Mailing Address
COMPLIANCE CONTACT	ADAMS, SHANNA	7039245130	AIRS/AFS	



Information System

COMPREHENSIVE ENVIRONMENTAL RESPONSE, COMPENSATION AND LIABILITY INFORMATION SYSTEM

Additional EPA Reports: [MyEnvironment](#) [Site Demographics](#) [Facility Coordinates Viewer](#) [Environmental Justice Map Viewer](#) [Watershed Report](#)

Query executed on: FEB-07-2014

ID	Information System	Superfund (NPL)	CERCLIS
NJD980770036	COMPREHENSIVE ENVIRONMENTAL RESPONSE, COMPENSATION AND LIABILITY INFORMATION SYSTEM	SUPERFUND (NON-NPL)	CERCLIS

# Other APIs



hazarddata.epa.gov/arcgis/rest/services/OEI/FRS\_Subfacilities/MapServer

ArcGIS REST Services Directory

Home > services > OEI > FRS\_Subfacilities (MapServer)

10/21/2016

### OEI/FRS\_Subfacilities (MapServer)

View In: [ArcGIS JavaScript](#) [ArcGIS.com Map](#) [Google Earth](#) [ArcMap](#) [ArcGIS Explorer](#)

View Footprint In: [ArcGIS.com Map](#)

**Service Description:** The FRS Sub Facility layer is currently comprised from two programs, namely, ARI stacks (release locations of regulated pollutants into the air); and the NPDES data set provides outfall to systems from facilities being monitored by the EPA. As more reliable data becomes available, other programs providing a complete picture of sub-facility data contained within the EPA universe. The FRS facility location

Map Name: Layers

[Legend](#)

[All Layers and Tables](#)

**Layers:**

- [ARIS\\_APS](#) (0)
- [NPDES](#) (1)
- [Zoom In Text](#) (2)

**Description:**

**Copyright Text:** US EPA Facility Registry Service

**Spatial Reference:** 102100 (3857)

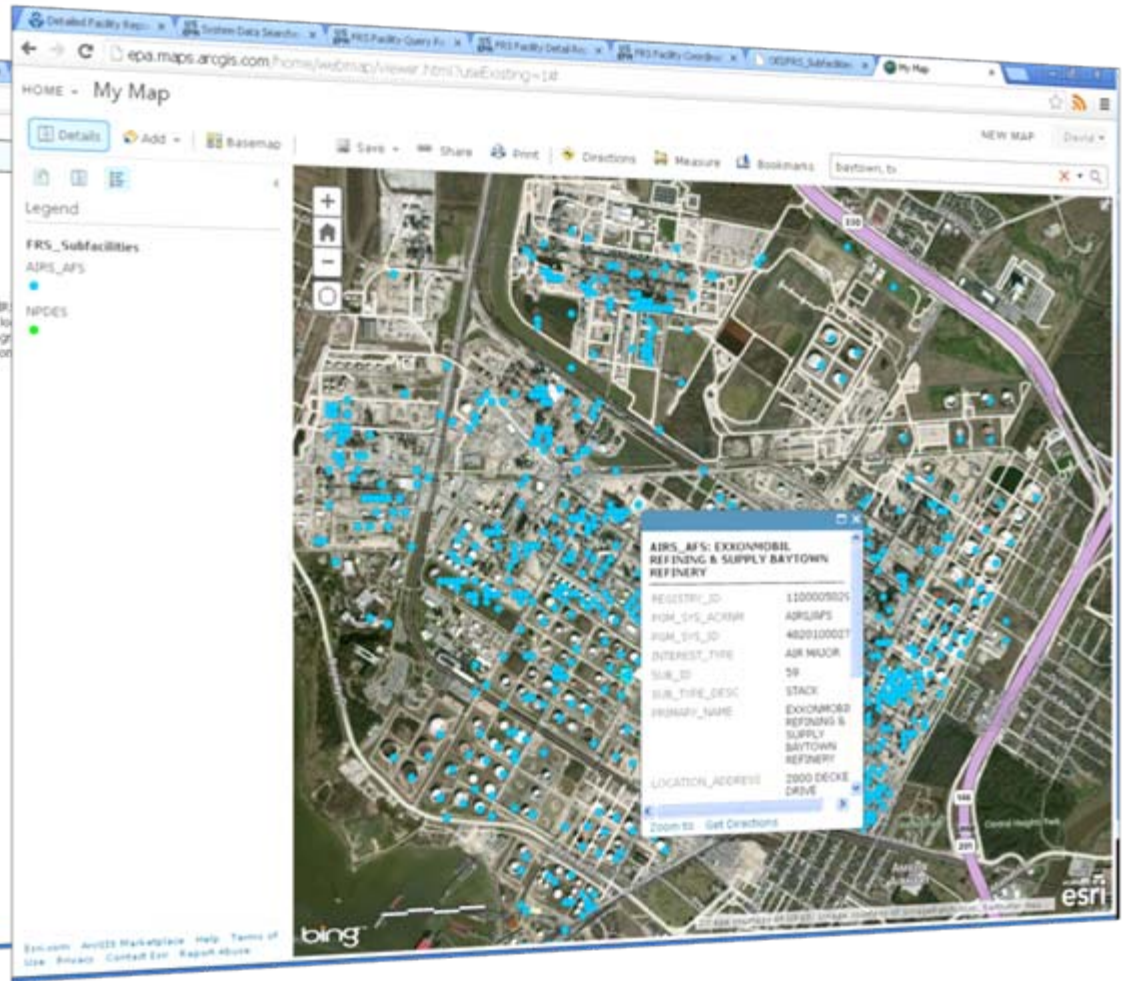
**Single Fused Map Cache:** false

**Initial Extent:**

XMin: -1.28048970513586E7  
YMin: 5198072.399813289  
XMax: -1.2176278930741478E7  
YMax: 5309364.712996475  
Spatial Reference: 102100 (3857)

**Full Extent:**

XMin: -1.999600552179396E7  
YMin: -1.9155306869442478E7  
XMax: 1.9959483137279287E7  
YMax: 1.915530686944254E7  
Spatial Reference: 102100 (3857)





# Using the FLA

## Scenario: Preparing for an Emergency

- Facility Linkage Application (FLA)
  - Make comparisons between State and FRS data
    - Batch upload high priority facilities
  - Quickly and easily correct FRS data
  - Download data
  - Tap into FRS Data Stewardship Network
- **Give direct input into how data is shown through FRS**
- **Understand how State data compares to EPA data**



# Using the FLA – Preparing for an Emergency



Excel Spreadsheet				
	A	B	C	D
13	16167			
14	12986			
15	16325			
16	13230			
17	13319			
18	17248			
19	1745			
20	2073			
21	2276			
22	17589			
23	2115			
24	2121			
25	2277			
26	17923			
27	14727			
28	18208			
29	14622			
30	1824			
31	24383			
32	26976			
33	2001			
34	28955			
35	29170			

CERCLIS

CWNS

E-GGRT

ECRM

BIA INDIAN SCHOOL

BRAC

EIA-860

LANDFILL

Other Program Systems:

401 CERTIFICATION

AFO

AIR EMISSION INVENTORY

IN-TEMPO

KS-FP

KY-TEMPO

MA-EPICS

ACES

ACRES

ADEM-PT

AIRS/AFS

AQS SITES TRANSA

AZURITE

BIA INDIAN SCHOOL

BMS

BOILER

BRAC

Data Source:

10419,2371,1173,11798,1423,128211

AIR PROGRAMS

ANIMAL OPERATIONS

ASSISTANCE AND SUPPORT PROGRAMS

Program Category:

AIR EMISSION INVENTORY

Primary Name:

Location Address:

City Name:

NEW ORLEANS

County Name:

State Code:

LA

Upload Program IDs

Browse...

la\_tempo.csv

Search

Reset

9

# Using the FLA – Preparing for an Emergency



## FRS

Facility Linkage Application

[Improve FRS Data](#)[Search](#)[Reports](#)[Help](#)

### Facility Search Results

Select a facility details button to view detailed information about the facility. Select an update button to go directly to the facility update page.

Rows

50



#### Download

Choose report download format:



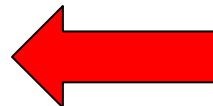
CSV



HTML



Email



This query returns more than 50,000 rows, please filter your data to ensure complete results.

	Registry ID	Facility Name	Location Address	City	County	State	Zip	Sta
<a href="#">Facility Details</a> <a href="#">Update</a>	<input type="checkbox"/>	110001207934	#1 COCHRAN (MONROEVILLE)	4200 WILLIAM PENN HIGHWAY	MONROEVILLE	ALLEGHENY	PA	15146
<a href="#">Facility Details</a> <a href="#">Update</a>	<input type="checkbox"/>	110004884368	ISTLER DANE AND GRANDSON INC	9128 KINGS HWY	KEMPTON	BERKS	PA	19529
<a href="#">Facility Details</a> <a href="#">Update</a>	<input type="checkbox"/>	110054861137	1 COCHRAN COLLISION & WAREHOUSE	862 SLEEPY HOLLOW RD	CASTLE SHANNON	ALLEGHENY	PA	15234

# Using the FLA – Preparing for an Emergency



## Facility Update

Enter any needed changes then press the Submit button. Press the Reset button to restore the content of the page to what is currently saved in FRS.

Registry ID: 110000449104

Facility Name: BOC GASES

Location Address: 15200 INTRACOAST

City Name: NEW ORLEANS

County Name: ORLEANS

State Code: LA

Zip: 70129-2338

Federal Facility Code: N

Federal Agency Code:

Tribal Land Code: N

Tribal Land Name:

State Legislative District: SE

Small Business:

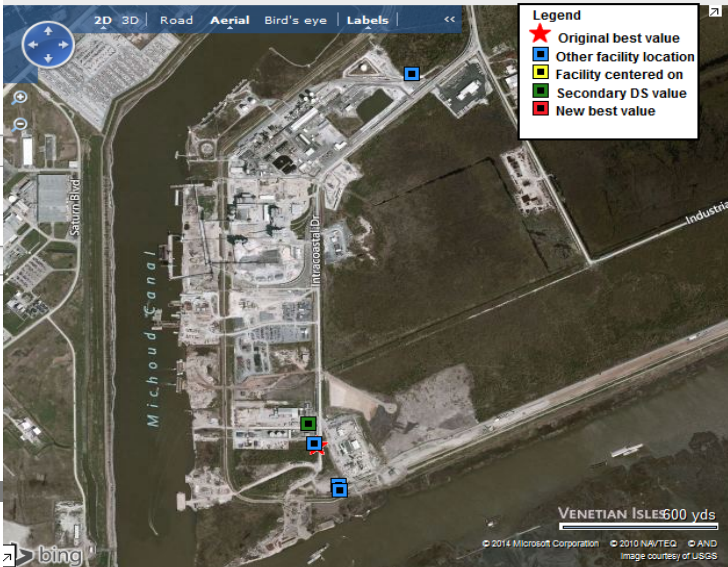
Environmental Justice Code:

Submit

Reset

## Facility Location Information

BOC GASES  
15200 INTRACOASTAL DRIVE  
NEW ORLEANS LA 70129-2338  
Latitude: 30.018363 Longitude: -89.900932  
EPA FRS ID: 110000449104



Directions

To change the location of the Representative Point (Best Pick Value) for this facility:

Choose a new point from one of the points that already exist.  
Click on the point, then in the pop up window click on the "Change Best Value" button.

or

Add a new location to the map by clicking the Enter Lat/Long button and entering the coordinates.

or

Add a new location to the map by clicking the Draw Point button at the bottom of the map.

[Having trouble seeing the Geolocator buttons?](#)

Restore Original Map

Enter Lat/Long

Draw Point

Action	Submitter	LRT Record ID	Conveyor of Record	Program System Name	System ID	Program System Subentity ID	Program Latitude (NAD 83)	Program Longitude (NAD 83)	Best Value (Y)	Collection Method	Accuracy Value (m)	Sc
		23035665	FRS	FRS	110000449104		30.018363	-89.900932	N	ADDRESS MATCHING-HOUSE NUMBER	30	
		11940470	TRIS-PREFERRED	TRIS	70129RCNDS15200		30.018668	-89.900066	N	UNKNOWN	20	
		11940471	TRIS-REPORTED	TRIS	70129RCNDS15200		30.016667	-89.9	N			
		14279920	COMMERCIAL VENDOR	RCRAINFO	LAD008189417		30.031523	-89.897342	N	ADDRESS MATCHING-HOUSE NUMBER	150	100
		23035665	FRS	FRS	110000449104		30.018363	-89.900932	N	ADDRESS MATCHING-HOUSE NUMBER	30	
Accept	JIM2		EPA_SLT	FRS	110000449104		30.019054	-89.901166	N	INTERPOLATION-PHOTO	23.36	94
Reject												



# EPA's use of the Look-up API for Industry Reports

- EPA is integrating look-up rest service into reporting done by Industry
- **Looking for state feedback – could something like this be useful for states?**

# EPA's Use of Look-up API for Industry Reporters



EPA United States Environmental Protection Agency

EPA Home Recent Announcements Terms and Conditions FAQs Help

Logged in as TIMOTHYBIZAL (Log out)

## Central Data Exchange

Contact Us

Last Login: 5/8/2013 9:58:16 AM

MyCDX Inbox (1) My Profile HelpDesk Submission History

### Manage Facilities

The map will display your facilities as they exist in FRS. Click on the facilities in the table to zoom to a facility. Click the facility points on the map for more options.

Organization: CGI Federal

EPA Registry ID	Facility Name	Facility Address	Edit	Remove
110000492413	ROHM & HAAS COMPANY	5000 RICHMOND ST PHILADELPHIA, PA 19137	Edit	Remove
110000337029	EXELON CORP SCHUYLKILL GENERATING STATION	2800 CHRISTIAN STREET PHILADELPHIA, PA 19146	Edit	Remove
110000377164	MASONITE CORPORATION	1001 S. 4TH AVE. LAUREL, MS 39440	Edit	Remove
110000502867	INEOS USA LLC GREEN LAKE PLANT	13050 TEXAS HIGHWAY 185 PORT LAVACA, TX 77414	Edit	Remove

Show All Facilities

+

-

NPDES, RCRAINFO, TRI, TSCA  
FRS Envirofacts: [Open](#)  
Compliance History: [Open](#)  

Inspect

Display Sub-Facilities

Report Error

Zoom to





## Wrap Up

- Help us understand your requirements!
  - Today at 3:30 Ballroom C
  - Thursday at 8:30 Ballroom A
- Contact the FRS Team to:
  - Access the REST service
  - Obtain form and map code samples
  - Access the FLA
- Learn more about FRS: [www.epa.gov/frs](http://www.epa.gov/frs)



## Contacts

Dave Smith

[Smith.DavidG@epa.gov](mailto:Smith.DavidG@epa.gov)

Ana Greene

[Greene.Ana@epa.gov](mailto:Greene.Ana@epa.gov)

Aaron Meyers

[Meyers.Aaron@epa.gov](mailto:Meyers.Aaron@epa.gov)

## **FRS Sessions:**

Today at 3:30 in Ballroom C

Thursday 8:30 am Ballroom A