

Environmental Information



EN2017

COLUMBIA RIVER BASIN COORDINATED ASSESSMENTS DATA EXCHANGE (CAX)

Greg Wilke, *Pacific States Marine Fisheries Commission*

2017 Exchange Network National Meeting

Innovation and Partnership

May 15-18, 2017

Sheraton Philadelphia Society Hill Hotel
Philadelphia, Pennsylvania

#EN2017

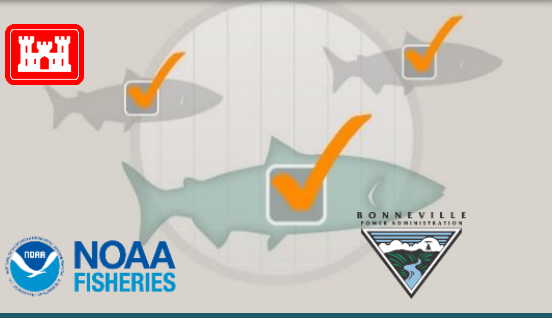
<http://www.exchangenetwork.net/en2017>

ABSTRACT

This presentation will cover background on fish-related data sharing needs of the Pacific Northwest and Columbia River Basin, and discuss the coordination efforts and technologies used to expand and adapt existing data sharing methods to match up with and take advantage of the resources built into the EPA Exchange Network.

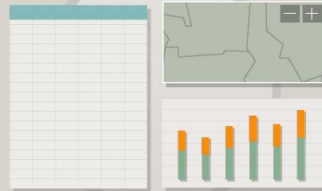
Background

Consistent Data Needs



NOAA VSP
BPA/BOR/COE FCRPS Biop
NPCC ISRP

Disparate Data Projects

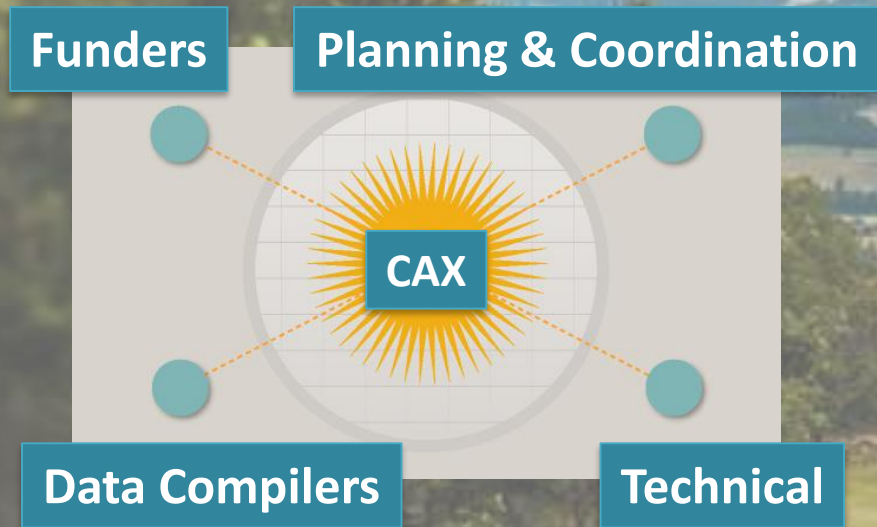


Data Collection & Sharing



Coordinated Assessments Project (CAX)

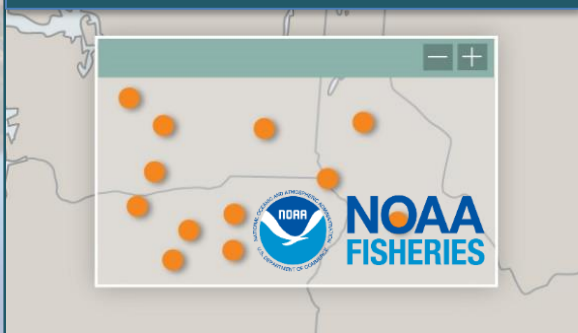
Participants



Coordinated Assessments Data

How

ESA Endangered & Threatened



What

High Level Indicators

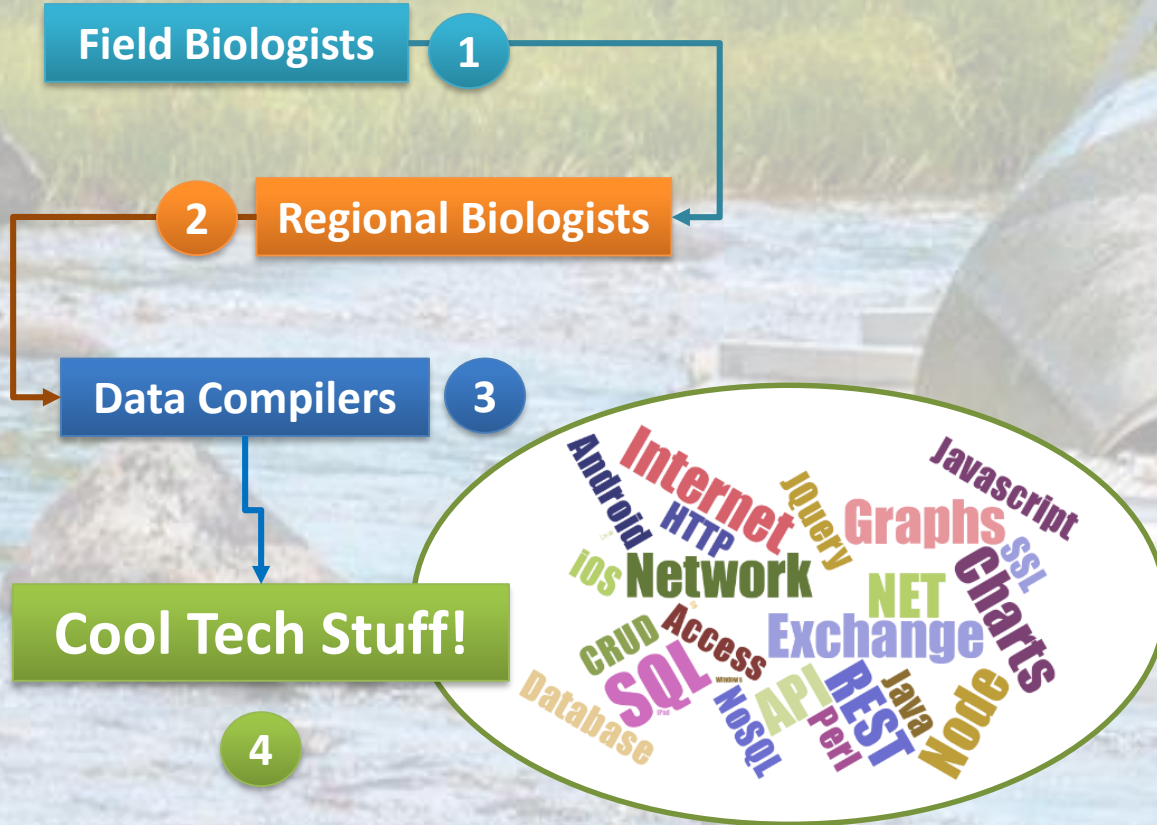


Types

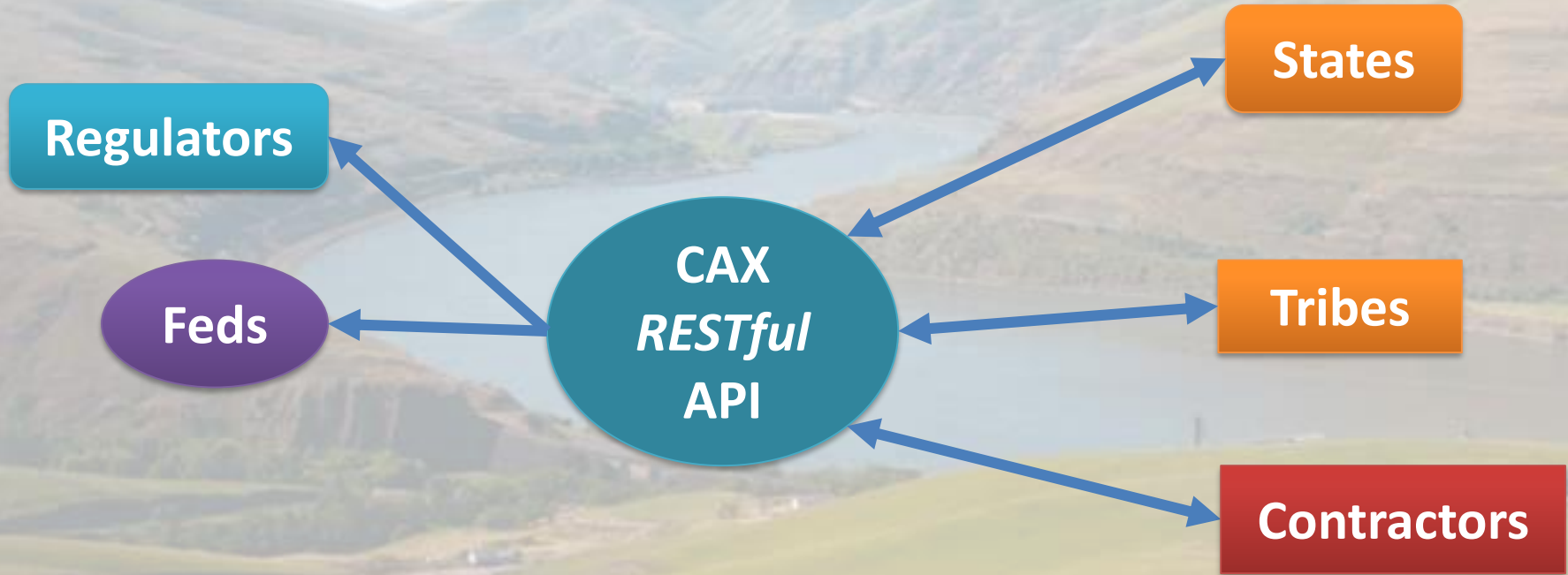
Abundance | Population Survival & Growth Rates



Getting from the Stream to the Users



Original Network Configuration Goal

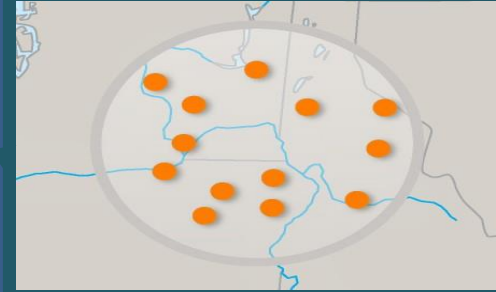


Challenges & Needs

Technical Infrastructure



Coordination & Admin

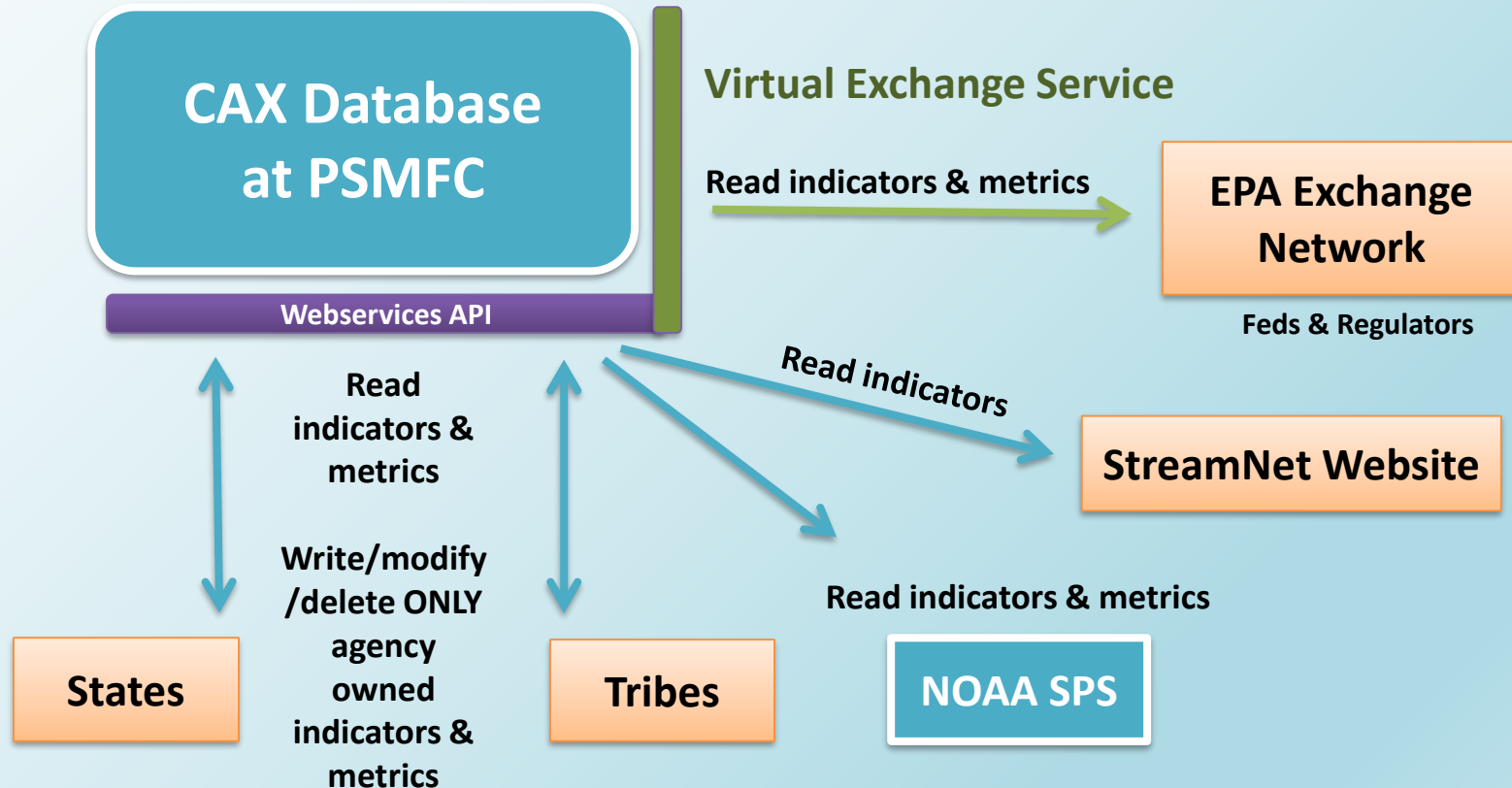


Data Flow & Reporting



EPA Exchange Network Grant

Exchange Network & Updated CAX Configuration



Columbia River Basin Coordinated Assessments Data Exchange (CAX)

**CAX Database
at PSMFC**

NOSA | RPerS | SARs

Query

VES

Return Dataset

The screenshot shows the CAX website with a blue header and a sidebar. The main content area displays the title 'Columbia River Basin Coordinated Assessment Data Exchange – CAX' and a 'Download full package' button. The sidebar lists various environmental categories, with 'Natural Resources' highlighted. The main content area also includes a 'Data Exchange Description' section and a 'Contact' section.

Environmental Information
exchange
Network

HOME FOR FIRST-TIME VISITORS FOR PROGRAM STAFF FOR IT STAFF

Sharing information for a cleaner environment

Search the web site

ABOUT DATA EXCHANGES PARTNERS KNOWLEDGE BASE EN2017 EN ALERTS

Home > Data Exchange > Natural Resources > Columbia River Basin Coordinated Assessment Data Exchange – CAX

Columbia River Basin Coordinated Assessment Data Exchange – CAX Support

Version: **1.0 - Supported** Data Exchange Status: **Flowing** [Download full package](#)

Data Exchange Description

The Columbia River Basin Coordinated Assessment Data Exchange (CAX) allows for efficient, consistent, and transparent data-sharing among the co-managers (fish and wildlife agencies and Tribes), regulatory agencies, and data consumers in the Columbia River Basin (CRB) for anadromous fish-related data. Development of the CAX was coordinated by the Washington Department of Fish and Wildlife and the Pacific Northwest Aquatic Monitoring Partnership with support from the Pacific States Marine Fisheries Commission's StreamNet project.

The CAX supports the exchange of four salmon and steelhead population indicators including natural origin spawner abundance, natural origin smolt to adult return rate, and natural origin recruits (adult and juvenile) per spawner. It is envisioned that over time, the CAX will be expanded to include most of the indicators of highest importance to fisheries management and restoration decision makers.

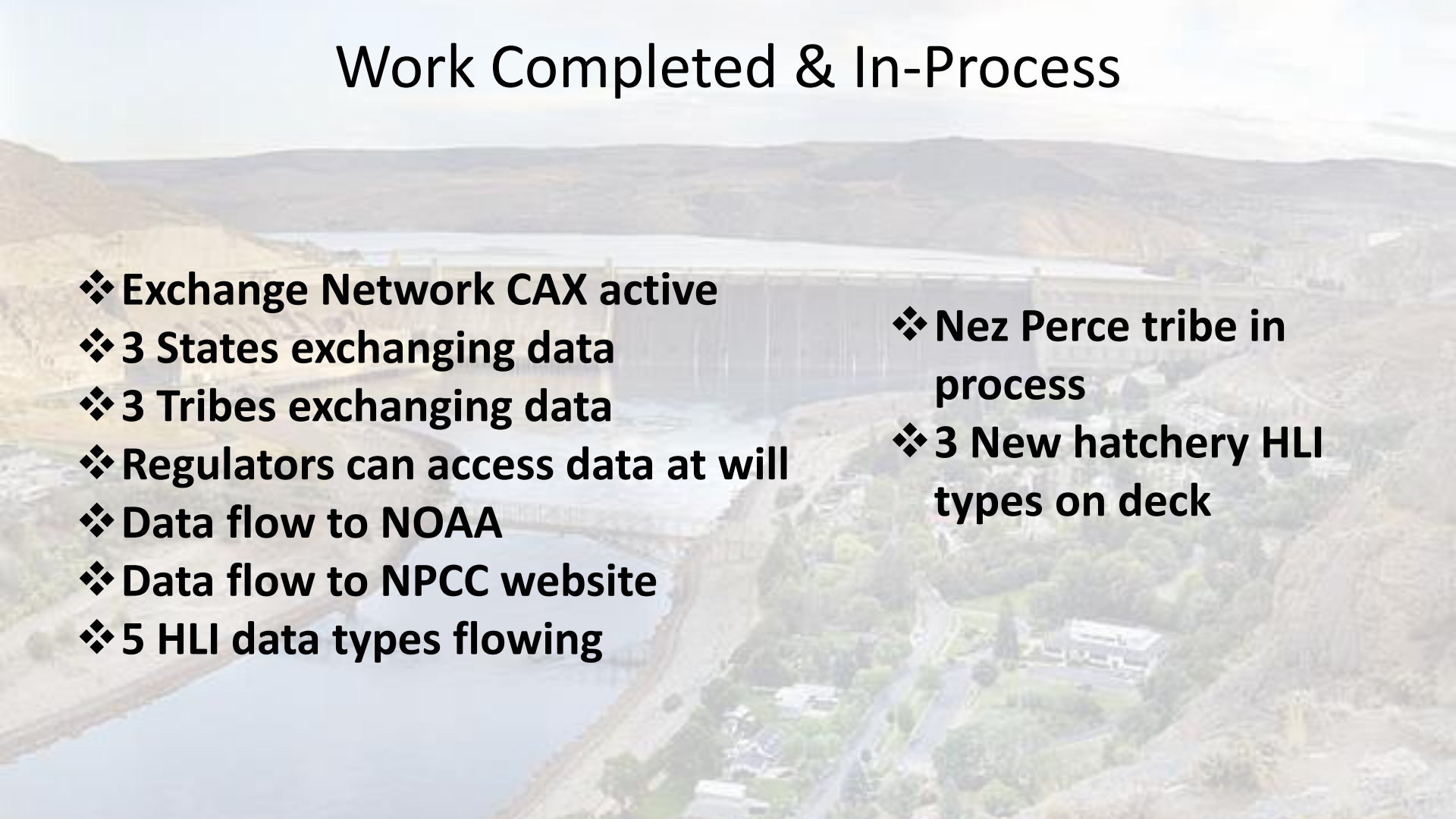
Contact

Greg Wilke
Pacific States Marine Fisheries Commission
503.595.3157
gwilke [at] psmfc.org

Profiles and Progress

Click the map to find contact information for Exchange Network Partners and to see Partners' progress toward implementing data exchanges

Work Completed & In-Process

- 
- ❖ Exchange Network CAX active
 - ❖ 3 States exchanging data
 - ❖ 3 Tribes exchanging data
 - ❖ Regulators can access data at will
 - ❖ Data flow to NOAA
 - ❖ Data flow to NPCC website
 - ❖ 5 HLI data types flowing
 - ❖ Nez Perce tribe in process
 - ❖ 3 New hatchery HLI types on deck