

Environmental Information



# EN2017

## BUILDING A RESULTS-ORIENTED ORGANIZATION

Todd Parfitt, *Wyoming DEQ and ECOS Vice President*

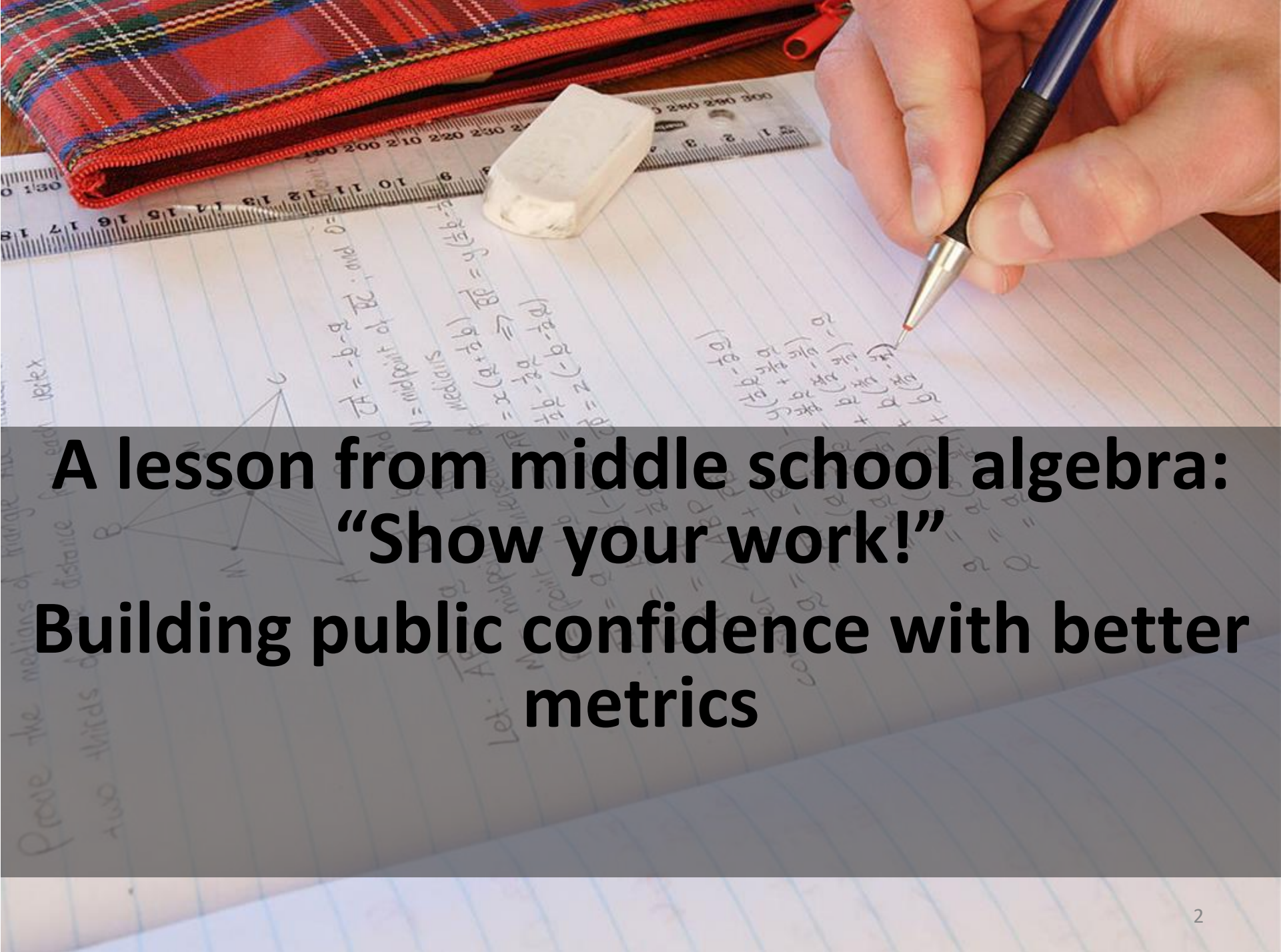
### 2017 Exchange Network National Meeting

Innovation and Partnership

May 15-18, 2017  
Sheraton Philadelphia Society Hill Hotel  
Philadelphia, Pennsylvania

#EN2017

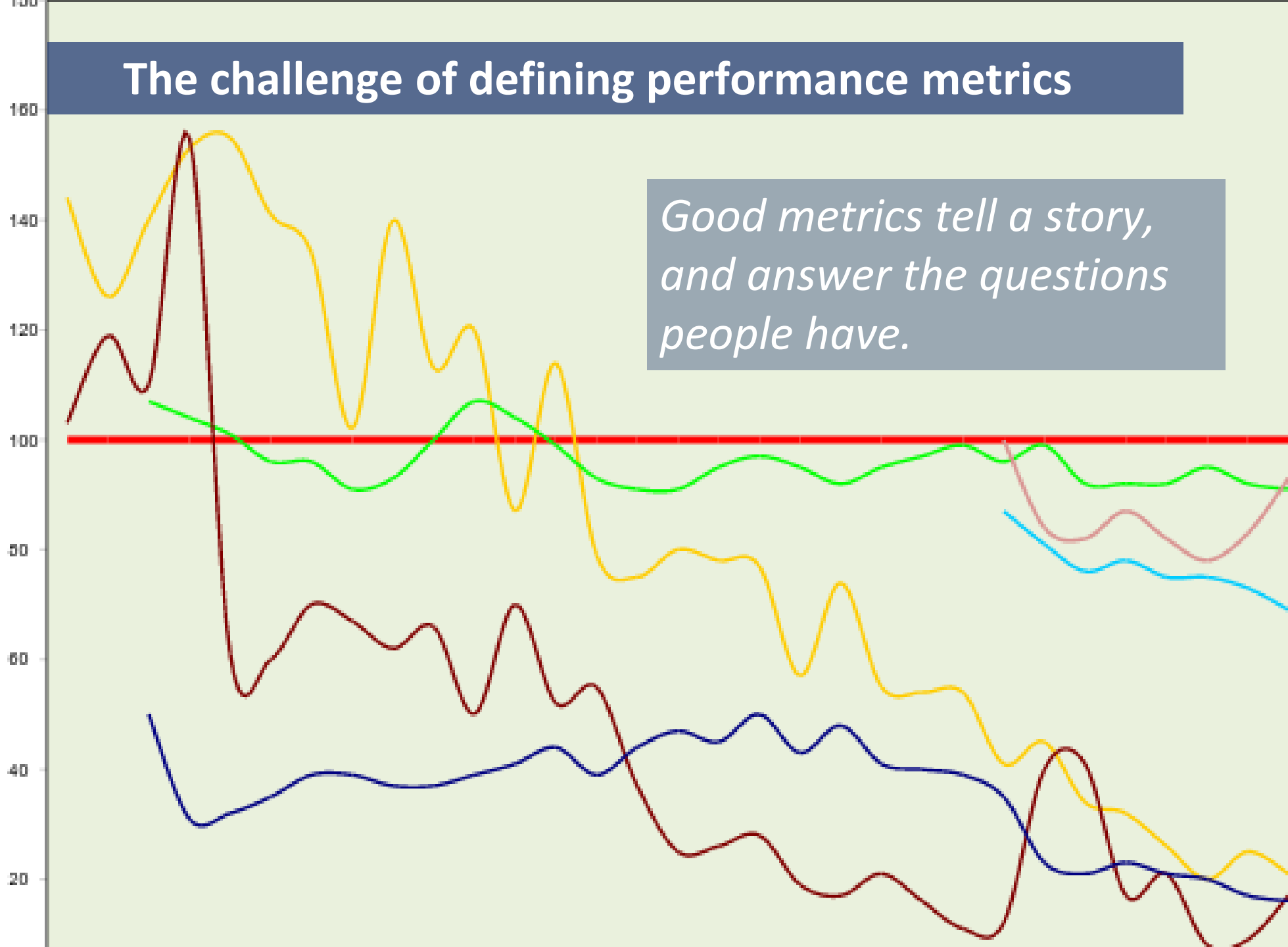
<http://www.exchangenetwork.net/en2017>



**A lesson from middle school algebra:  
“Show your work!”  
Building public confidence with better  
metrics**

# The challenge of defining performance metrics

*Good metrics tell a story,  
and answer the questions  
people have.*





What are the questions people have?





# Asking ourselves good questions

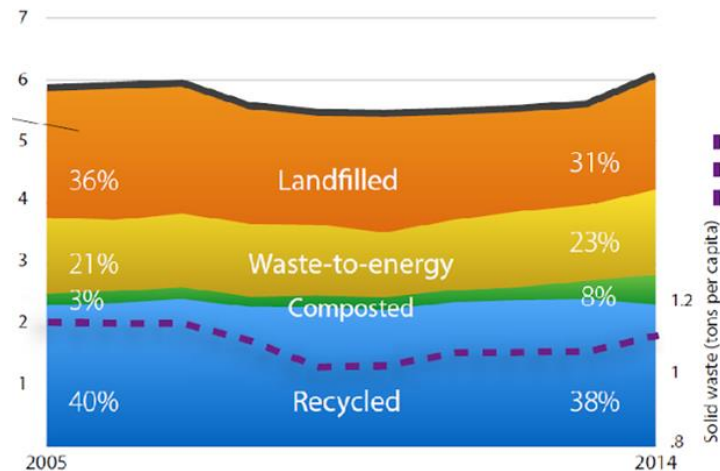
## Are Minnesota's lakes and streams getting cleaner?

Moderate progress

Clarity changes in Minnesota lakes through 2014



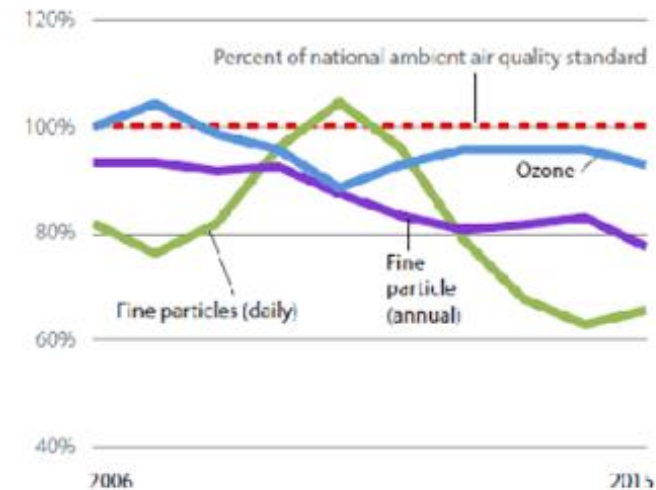
## What happens to solid waste in Minnesota?



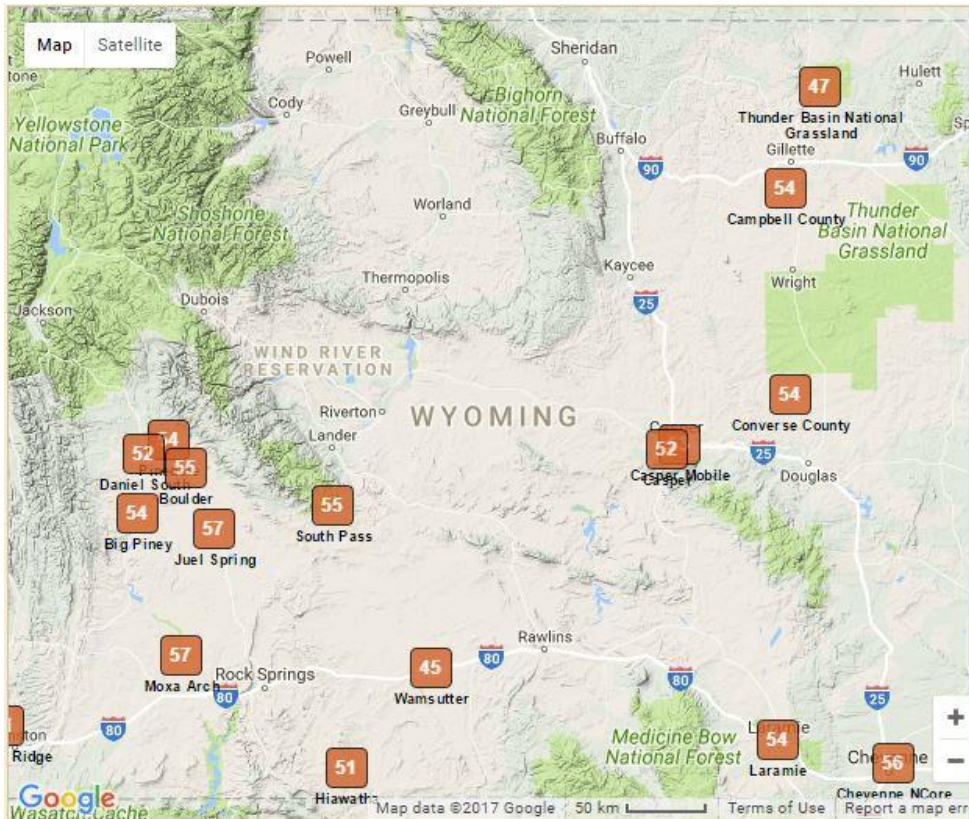
## Is our air healthy to breathe?

Moderate progress

Key air pollutants in Twin Cities



# Wyoming Air Quality Monitoring Network



## Air Quality Information

### Ozone ?

1 Hour Average	53 ppb
8 Hour Rolling Average	41 ppb

### Nitrogen Dioxide ?

1 Hour Average	2 ppb
----------------	-------

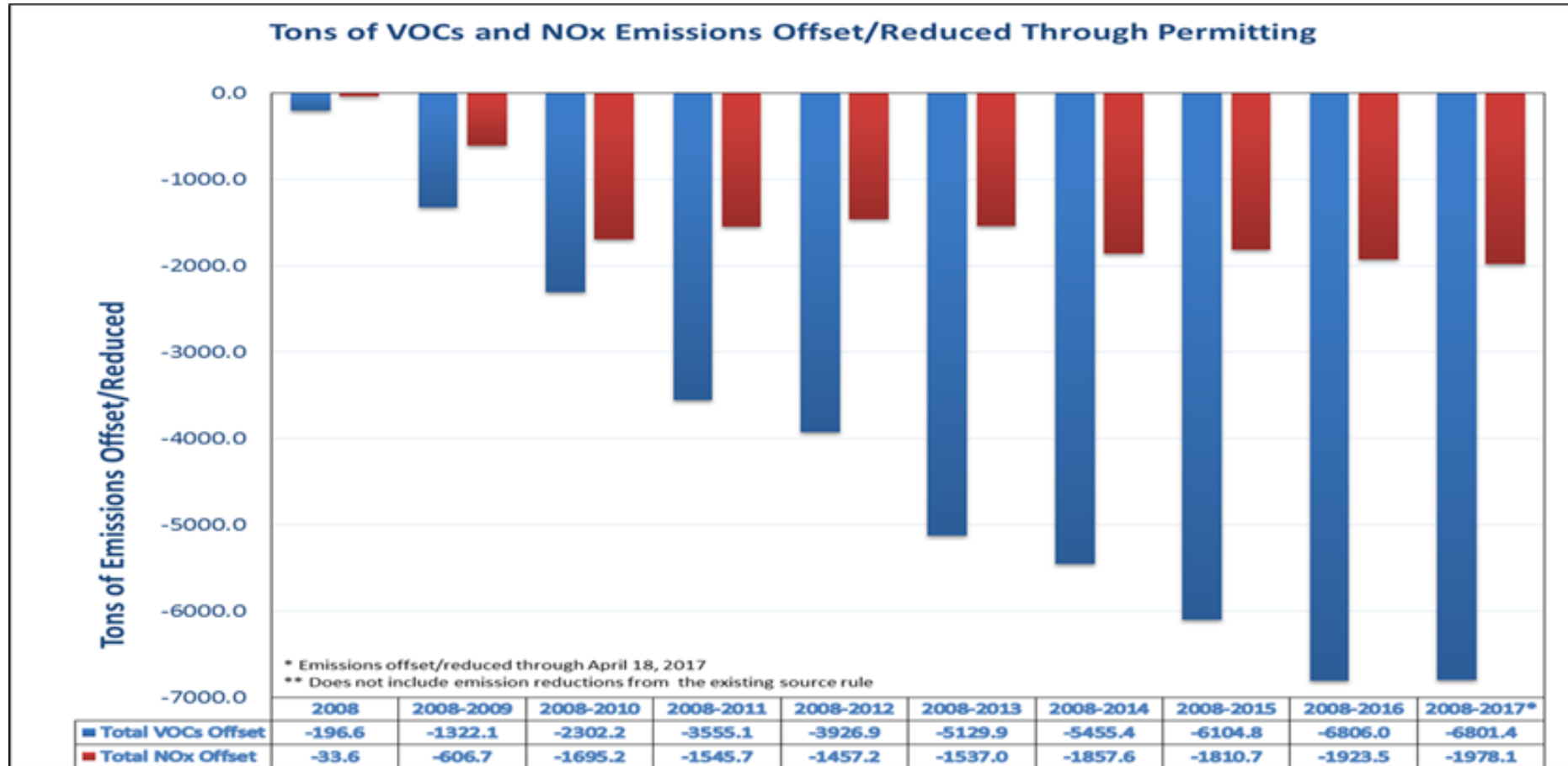
### Particulate Matter PM<sub>10</sub> ?

24 Hour Rolling Average	8 µg/m <sup>3</sup>
-------------------------	---------------------

## Meteorology

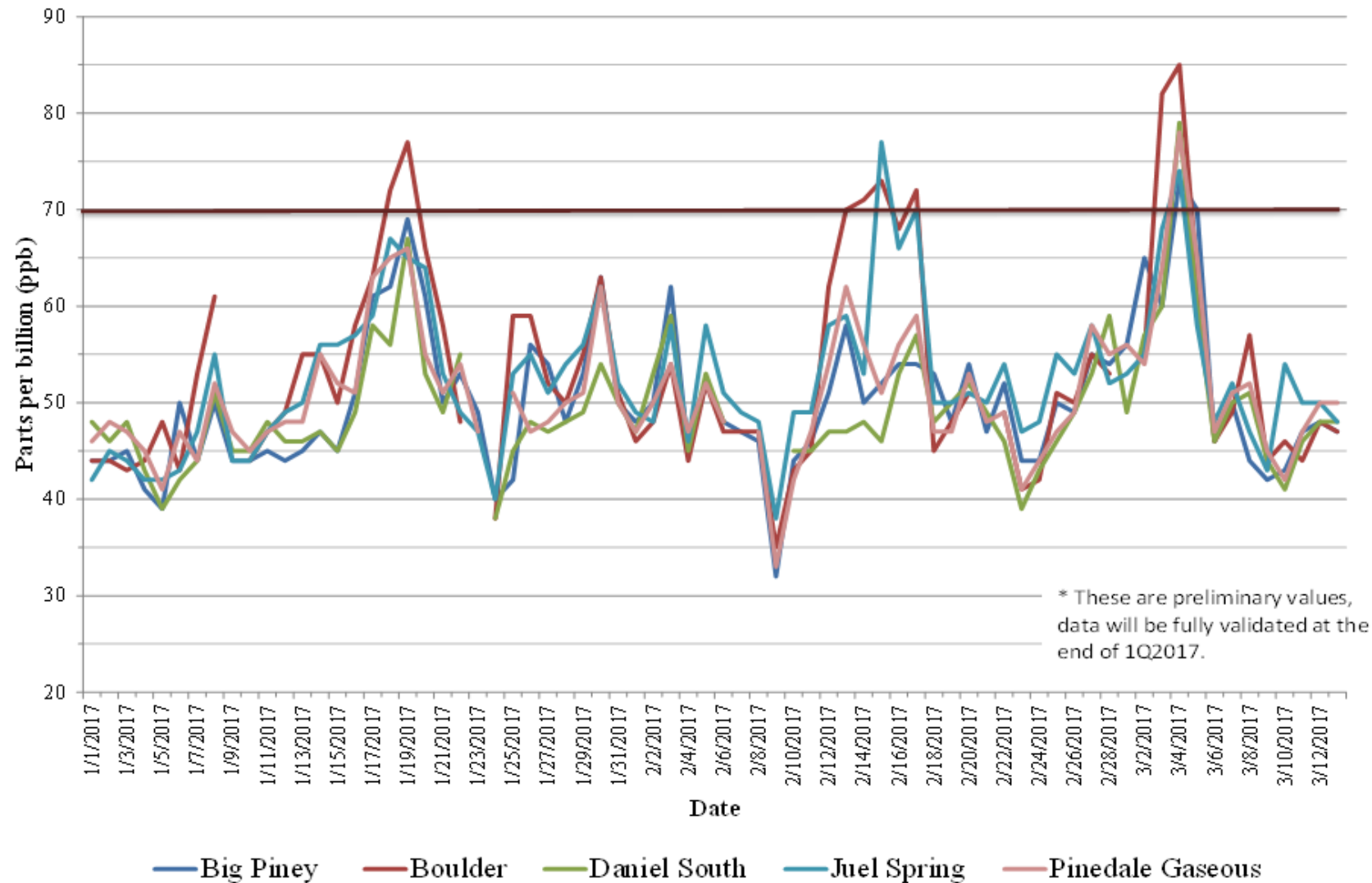
Temperature	67 ° F
Relative Humidity	25 %
Wind Speed	16 mph
Wind Direction	SSW
Yesterday's Precipitation	0.01 in

# Wyoming Ozone Nonattainment Area



# Wyoming Ozone Nonattainment Area

**\* Preliminary\* Daily Maximum 8-hr Ozone Averages  
AQD's UGRB Stations**





# ECOS Measures Project

- Common measures to communicate public health and fundamental results
  - Telling our story in a meaningful and understandable way
- ECOS Planning Committee
  - ECOS Measures Workgroup
- Next Steps



## E-Enterprise Performance Measures and Metrics

- Being developed for state, tribal, and U.S. EPA E-Enterprise executive decision-making
- Capturing overall E-Enterprise portfolio performance and related priorities (i.e. shared services creation and adoption)
- Measuring progress towards efficient program implementation that contributes to environmental outcomes

# How does Exchange Network and E-Enterprise work help tell our story?





**What questions would help you show your work?**

